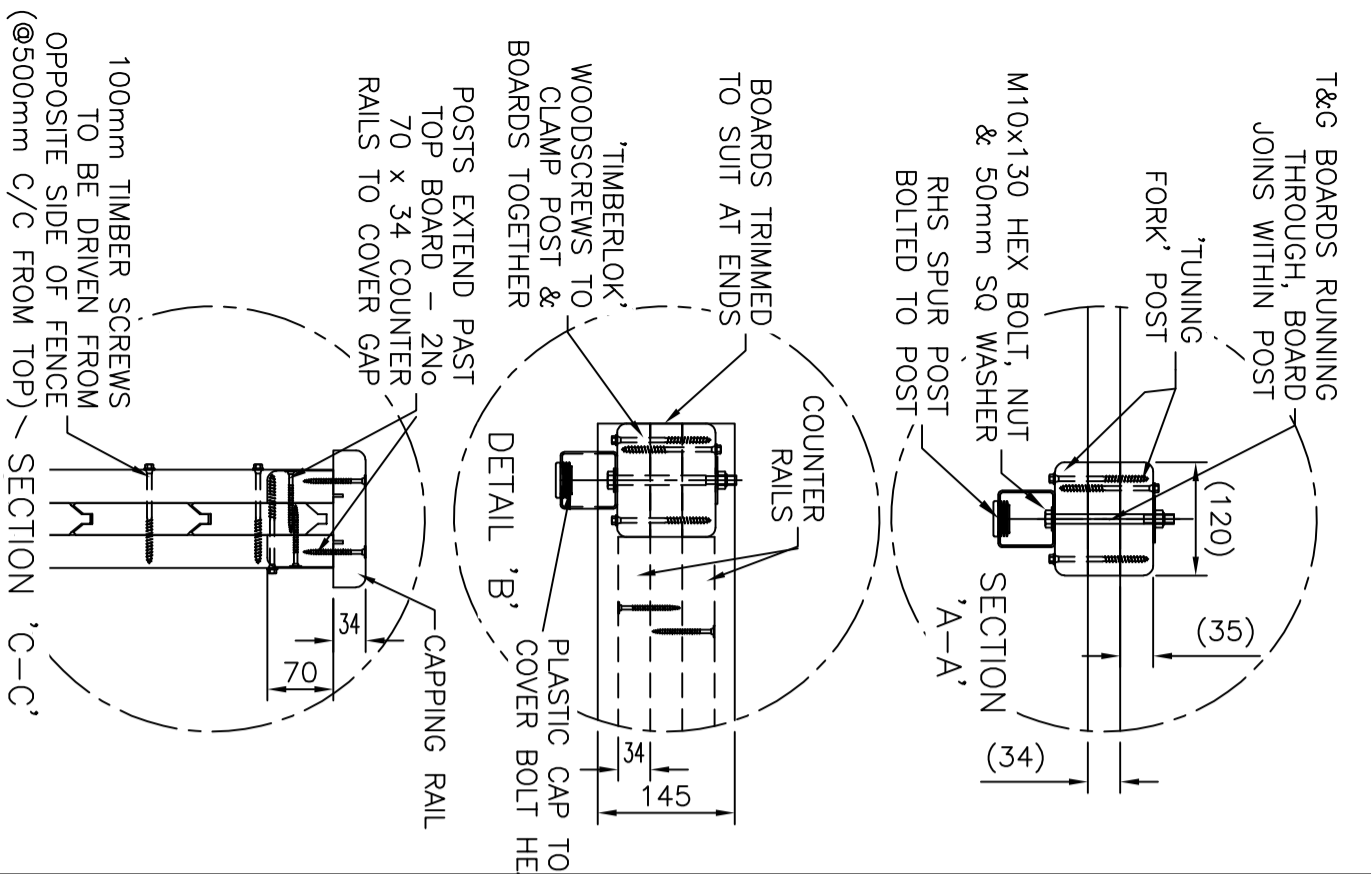


**DO NOT SCALE - IF IN DOUBT ASK**

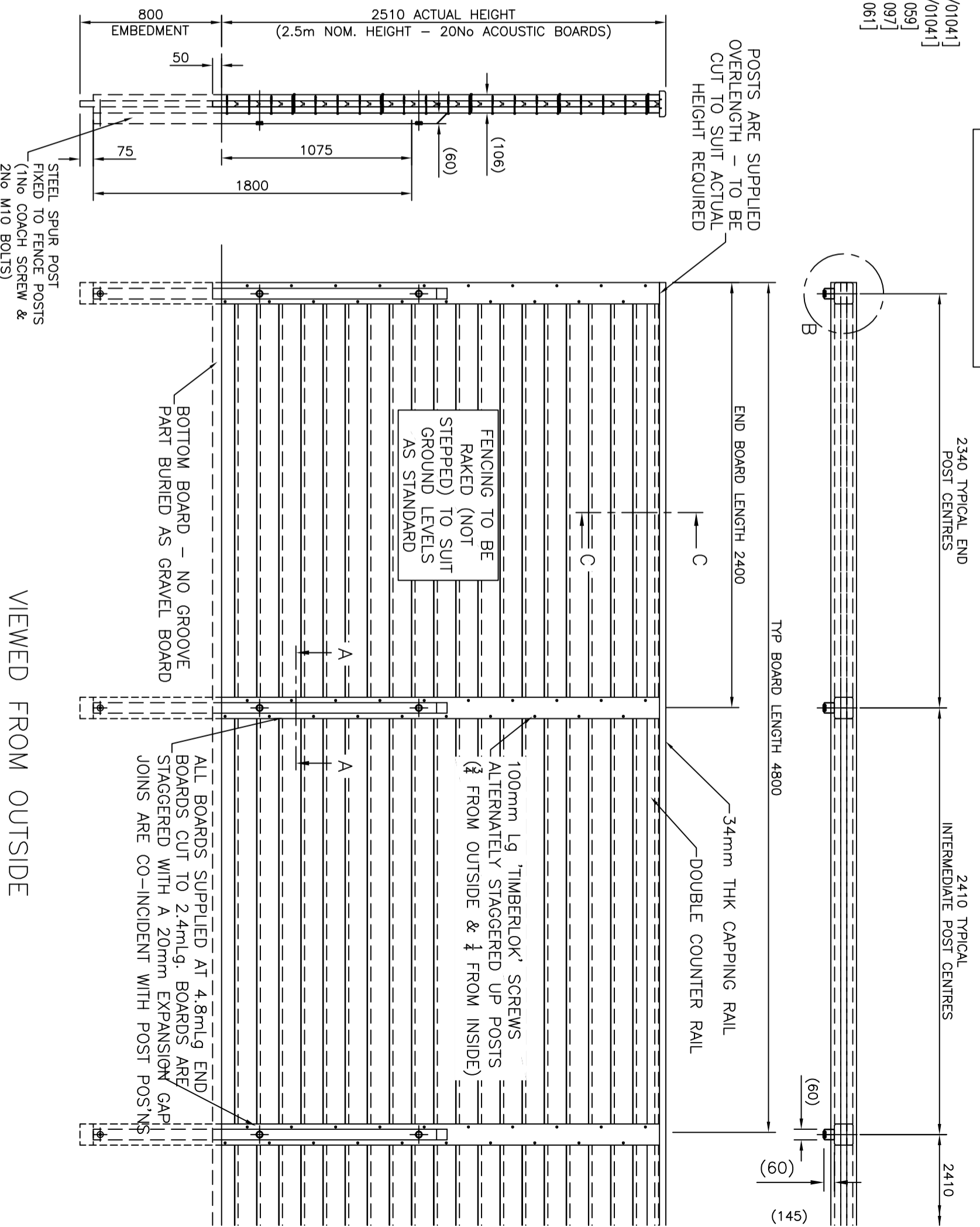
**NOTES**

- MATLS - STEEL SPUR POSTS, GALVANISED & PPC BLACK
- 60 x 60 x 2 SHS (SECTIONS VARY WITH HEIGHT)
- TIMBER TREATED WITH 'JAKKURE' PROCESS
- ACOUSTIC BOTTOM BOARD - 142.75 x 34 THK (123 Nom. FACE) [J7/01041]
- ACOUSTIC T&G BOARDS - 142.75 x 34 THK (123 Nom. FACE) [J7/01041]
- CAPPING RAIL - 145 x 34 THK PAR [J7/01059]
- POST COVER BOARDS - 120 x 35 THK [J7/01097]
- COUNTER RAIL - 70 x 34 THK PAR [J7/01061]

ALL FIXINGS ARE GALVANISED OR STAINLESS STEEL



FENCING TO BE RAKED (NOT STEPPED) TO SUIT GROUND LEVELS AS STANDARD



VIEWED FROM OUTSIDE

**JACKSONS**  
FINE FENCING

Stowling Common  
Near Ashford,  
KENT. TN25 6BN  
Telephone : 01233 750393  
Fax: 01233 750403  
Int. Tel : +44 (0)1233 750393

This Drawing is The Property Of H.S. Jackson & Son (Fencing) Ltd.  
And May Not Be Copied Or Reproduced In Any Way Without Prior Written Permission.

8	16/03/18	TIMBER SCREWS
7	11/11/16	TIMBER DETAILS CORRECTED
6	24/08/16	RAKED NOTE ADDED
5	23/08/16	STEPPED NOTE ADDED
4	27/11/13	MATERIAL LIST REVISED
3	16/12/11	UPDATE

Drawn	JR	TITLE	DETAIL OF JAKOUSTIC FENCING SYSTEM - 2.5mh
Date	16/01/05	CUSTOMER	
Checked	AT	ACK No.	06 J7/01043
Size	A3	Scale	1:25 U.O.S.
		Drawing No.	06 J7/01043
		Sheet	1 - 2.5mh