



## Metal Railings Protect Camberwell Lodge Care Home

**Jacksons  
Fencing**

### Products

- Barbican Imperial® fencing and gates

### Background

Camberwell Lodge care home is a brand new home in Southwark, London, the latest addition to the portfolio of Country Court's 35+ residential care and nursing homes across the UK. Country Court's slogan 'our family, caring for yours' depicts the passion that goes into each home, which is exactly what each place is - a home where people can live as they would normally. Residents who are able, can come and go as they please, and intergenerational interaction events such as regular toddler music groups and visits from local school children help to provide daily activities and social contact. Musicians, singers, community groups, and hairdressers are present at the home every week, to help residents feel good and learn new skills and hobbies.

Their flagship London home, Camberwell Lodge, specialises in nursing, residential, short-term respite, and dementia care for up to 98 people. The home features a pub, wellness suite, and a roof terrace with a bistro café and excellent views of the London skyline.





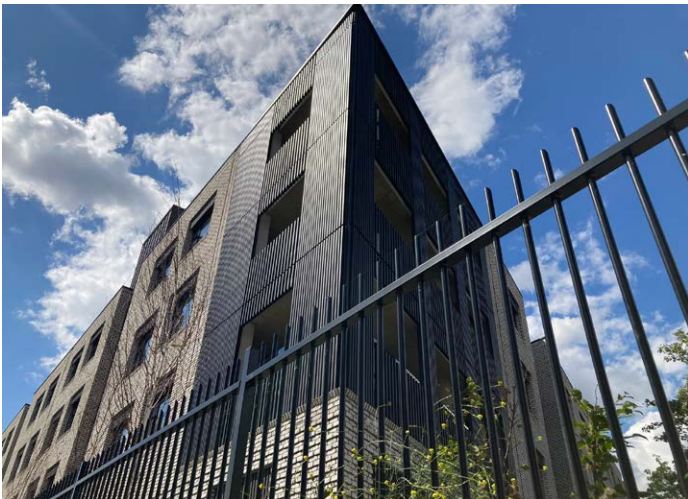
## Solution

To provide demarcation and security around the perimeter, we supplied 154m of Barbican Imperial vertical bar railings at 1.8m high. Featuring slim, rounded tubular pales and concealed fixings, the solution is a strong yet traditional and elegant looking fence, with a number of modern design updates to enhance security. The railings were hot dip galvanised and polyester powder coated black to provide a durable finish to protect them from rust, and supplied with our 25 year guarantee. Featuring a bold, contemporary design, the building is complemented perfectly by the fence which mirrors the black, vertical cladding used within the building design.

Situated in central London, a secure care park for staff, residents, and visitors was essential to maximise convenience and accessibility for relatives visiting and increase satisfaction and safety of residents who come and go. We also supplied an automated 3m wide sliding gate with matching Barbican Imperial infill. The vertical bar design not only provides ample security and protection against climbing and vandalism with its welded pale-through-rail construction, but also provides a smart, sleek appearance conducive to a luxury facility.

The project was developed in partnership with WGP Architects and Horizon Building Contractors and achieved an 'excellent' BREEAM rating, featuring low-carbon technologies such as solar panels, a combined heat and power boiler, and an air source heat pump. The building also features biodiversity roofing and cyclist facilities. Choosing our fencing with its long guarantee and lifespan helped to contribute to this sustainability rating.

Overall, security fence panels are a critical component of a comprehensive security strategy, providing a physical barrier that helps protect property, assets, and individuals from unauthorised access and intrusion. Browse our range of security fence panels.



Barbican Imperial® fence detail



Automated 3m wide sliding gate

For further information on products featured visit: [www.jacksons-security.co.uk](http://www.jacksons-security.co.uk)

