



## Safety fencing for new housing development

**Jacksons  
Fencing**

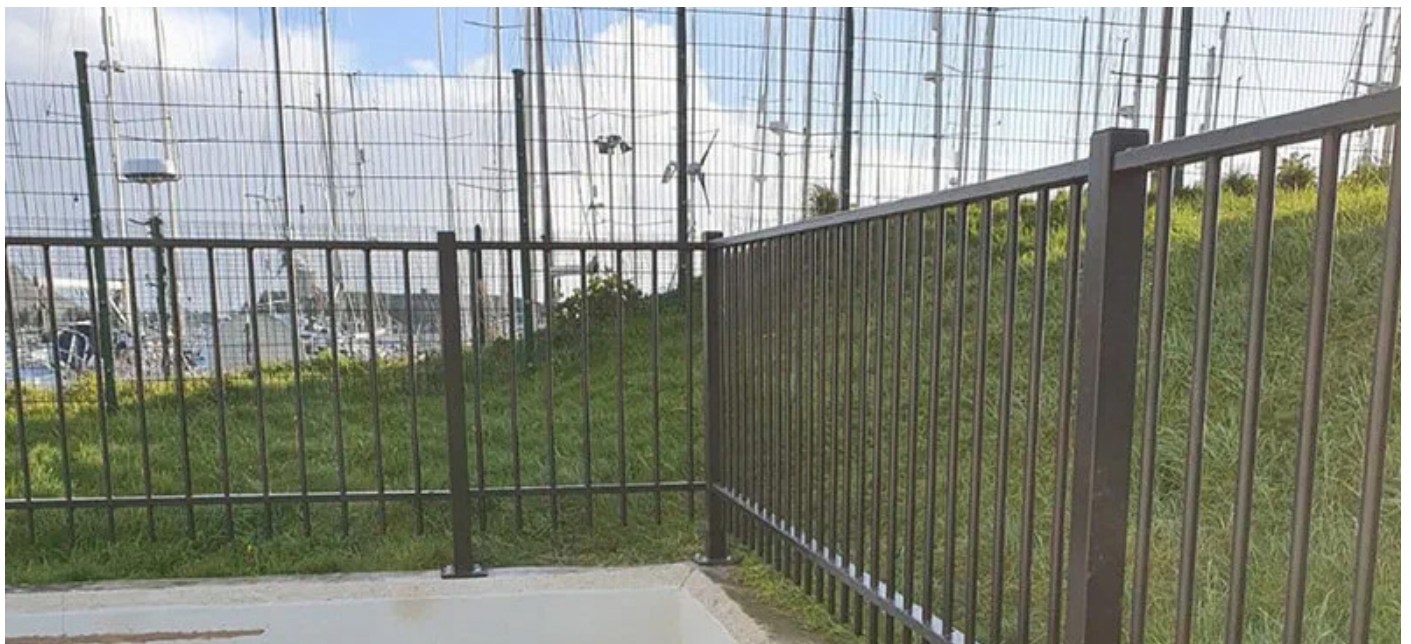
### Products

- Sentry Residential Metal Railings

### Background

TAs part of a wider regeneration of Plymouth, Teats Hill, the 'unforgotten corner' has undergone a transformation after residents demanded change. Plymouth City Council, in partnership with many organisations such as Plymouth and Exeter Universities, Blue Health, and the National Marine Aquarium, picked five sites across the city to be regenerated, to improve the quality of life of residents. In the Teats Hill area, an existing play area was revamped with new equipment to reflect its marine location and history, and an amphitheatre was built to accommodate educational activities, public events, and performances.

Alongside the development, Teats Hill flats, which were built in the late 1930s, were renovated by Mi-space Construction. The flats offer amazing sea views and a great location near the National Marine Aquarium, but had fallen into disrepair over the years. Current building regulations mean it is a legal requirement for any wall over 600mm high to have a handrail of at least 1100mm high, to protect people from falls. A wall surrounding the flat was over this height and therefore needed fencing.



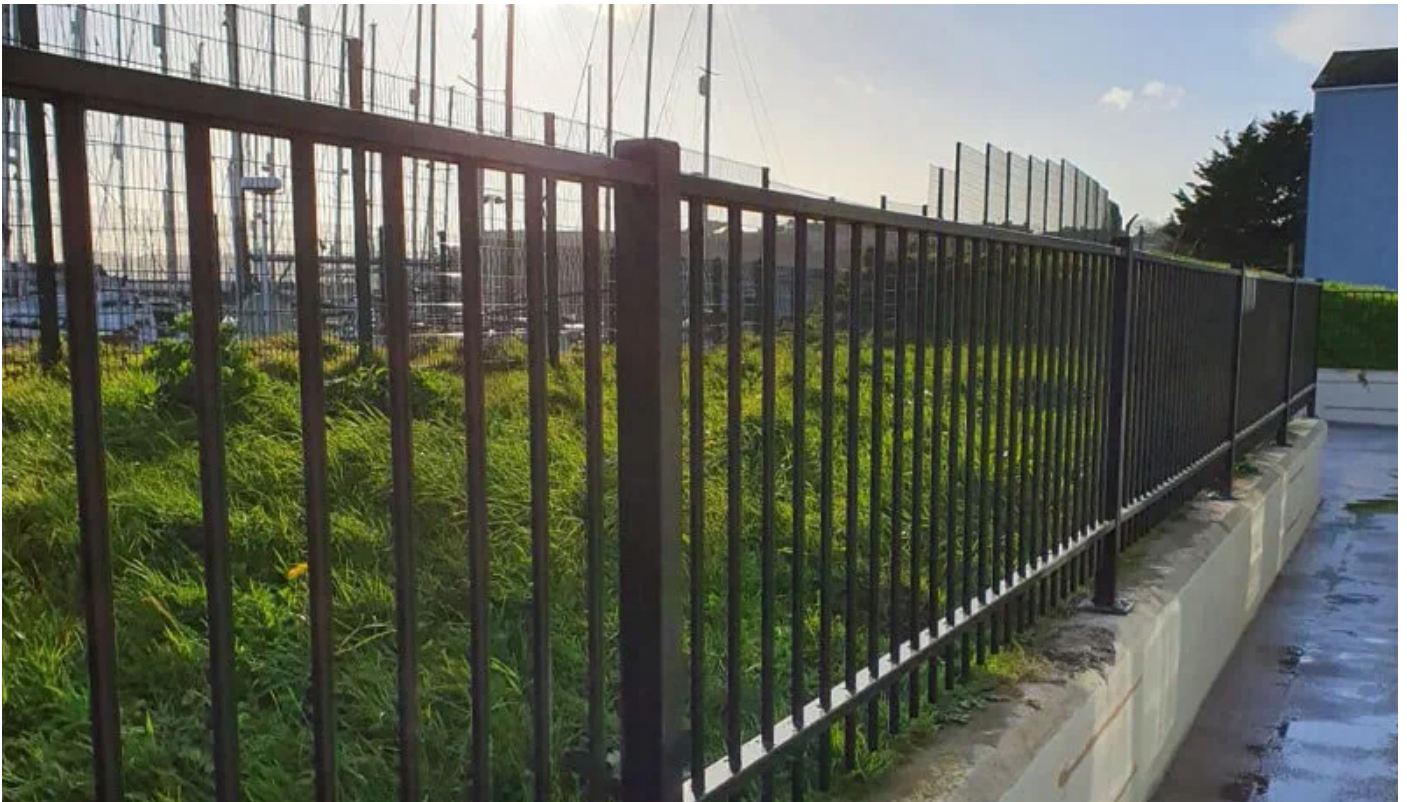


## Solution

Our Sentry® Residential railings were installed on top of a small wall used for demarcation by Chiffi Group Ltd, Constructionline Gold Member fence contractors. With a tubular construction and welded stopped pale-through-rail design, the railings provide a strong but lightweight safety fencing solution. Careful consideration was given to preserve the original features of the building during the renovation, so our metal railings were ideal; designed to offer a more convenient, modern alternative to traditional wrought iron railings, while providing the same elegant appearance. As with all our steel products, the railings are hot dipped galvanised inside and out for long-lasting protection against rust and corrosion and were additionally polyester powder coated black to provide a durable and attractive solution to match the renewed aesthetic of the building.

Crucially, the pale spacing of the railings conforms to building regulations, which state that a 100mm sphere should not be able to pass between pales, to prevent a trap hazard, which is particularly essential in areas where children can come into close contact with the fence.

Investing in long-lasting fencing is ideal as it reduces long-term costs for repairs and replacements, leaving maintenance budgets available for other necessities. With a 25 year guarantee, the benefits of choosing high quality fencing will be seen for years to come in this area of positive change.



Sentry® Residential railings

For further information on products featured visit: [www.jacksons-security.co.uk](http://www.jacksons-security.co.uk)