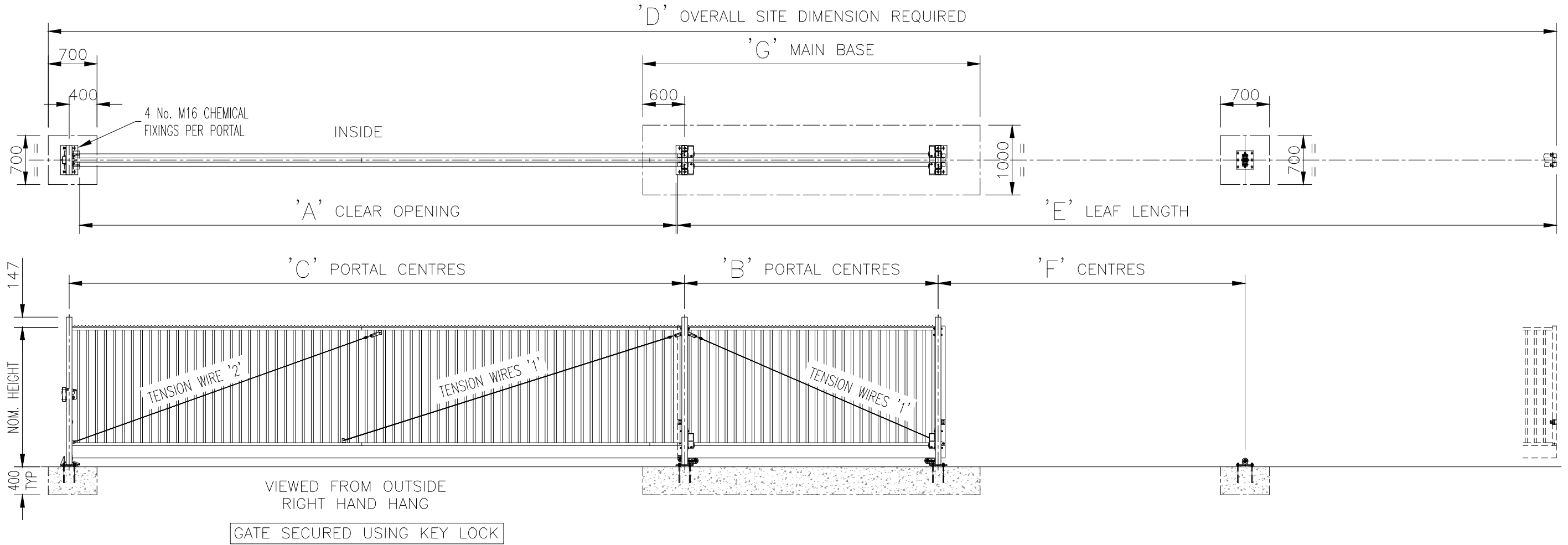


REFER TO DRAWING J1/03087 FOR INSTALLATION DETAILS & PROBLEM SOLVING
 REFER TO DRAWING J1/03095 FOR TYPICAL PERT LAYOUT DETAILS



| | NOMINAL OPENING SIZE | 2m | 2.5m | 3m | 3.5m | 4m | 4.5m | 5m | 5.5m | 6m | 6.5m | 7m | 7.5m | 8m | 8.5m | 9m | 9.5m | 10m |
|-----|---------------------------|------|------|------|------|-------|-------|-------|-------|-------|-------|-------|-------|-------|-------|-------|-------|-------|
| 'A' | ACTUAL CLEAR OPENING | 2051 | 2551 | 3051 | 3551 | 4051 | 4551 | 5051 | 5551 | 6051 | 6551 | 7051 | 7551 | 8051 | 8551 | 9051 | 9551 | 10051 |
| 'B' | HANG PORTAL CENTRES | 1234 | 1250 | 1266 | 1411 | 1556 | 1701 | 1975 | 2249 | 2265 | 2539 | 2813 | 2829 | 3361 | 3635 | 3780 | 3925 | 4715 |
| 'C' | HANG/CLOSE PORTAL CENTRES | 2326 | 2826 | 3326 | 3826 | 4326 | 4826 | 5326 | 5826 | 6326 | 6826 | 7326 | 7826 | 8326 | 8826 | 9326 | 9826 | 10326 |
| 'D' | OVERALL SITE DIMENSION | 6226 | 7242 | 8258 | 9403 | 10548 | 11693 | 12967 | 14241 | 15257 | 16531 | 17805 | 18821 | 20353 | 21627 | 22772 | 23917 | 25707 |
| 'E' | TOTAL LEAF LENGTH | 3700 | 4216 | 4732 | 5377 | 6022 | 6667 | 7441 | 8215 | 8731 | 9505 | 10279 | 10795 | 11827 | 12601 | 13246 | 13891 | 15181 |
| 'F' | SUPPORT WHEEL CENTRES | 1250 | 1500 | 1750 | 1900 | 2100 | 2350 | 2650 | 2900 | 3150 | 3400 | 3650 | 3900 | 4150 | 4400 | 4700 | 4900 | 5000 |
| 'G' | MAIN BASE SIZE | 2434 | 2450 | 2466 | 2611 | 2756 | 2901 | 3175 | 3449 | 3465 | 3739 | 4013 | 4029 | 4561 | 4835 | 4980 | 5125 | 5915 |
| | TENSION WIRE REQUIRED | NONE | NONE | NONE | NONE | NONE | 1 | 1 | 1 | 1 | 1 | 1 | 1 | 1 | 1 & 2 | 1 & 2 | 1 & 2 | 1 & 2 |

NOTES.
 ALL DIMENSIONS ARE IN mm (UNO)
 FOUNDATION SIZES ARE THE MINIMUM REQUIRED ASSUMING GROUND BEARING CAPACITY OF 100kN/m²
 DEVIATION FROM DATUM LEVEL AT TOP OF GATE FOUNDATIONS NOT TO EXCEED ±10
 NOMINAL RUNNING CLEARANCE UNDER GATE IS 125mm
 M16 STUDDING TO BE LEFT 75mm ABOVE FOUNDATION LEVEL
 M16 NUTS SHOULD BE INSTALLED ABOVE & BELOW BASEPLATES
 ALLOW 20mm GROUT FOR LEVELLING PORTALS
MATERIALS.
 PORTALS: 80 x 80 x 3.6 SHS
 RUNNING TUBE: ø178 x 5 CHS
 RAILS: 60 x 40 x 2 RHS
 STILES: 60 x 60 x 2 SHS
 PALES: ø32 x 1.5 CHS
 TUBES, RAILS, PALES & POSTS UPTO 60 x 60 x 2 etc M.STEEL ERW to BS. EN 10305 PT 3/5 E220 + CR2 + S1
 BLACK MATERIAL
 GATE POSTS & POSTS LARGER THAN 60 x 60 x 2 EN 10219 - S235JR
 ANGLE IRON & FLAT BAR BS EN 10025 - S275JR
 CHANNELS etc BS EN 1002 - S275JR
FINISH.
 GALVANISED TO BS EN ISO 1461
 POWDER COATED: IF REQUESTED
 STANDARD HEIGHTS INCLUDE 1.25m, 1.5m, 1.8m, 2m & 2.5m

| | | | |
|--|--|----------------------------|--|
| <h1>Jacksons</h1> <h2>FINE FENCING</h2> <p>Stowing Common Near Ashford, KENT. TN25 6BN Telephone : 01233 750393 Fax: 01233 750403 Int. Tel : +44 (0)1233 750393</p> | <p>DO NOT SCALE - IF IN DOUBT ASK</p> <p>04/12/13 Original Issue</p> | Drawn WB | TITLE SENTRY CANTILEVER SLIDING SINGLE GATE 129 PITCH MANUAL CRIB SHEET |
| | | Date 04/12/13 | |
| | | Checked CJ | CUSTOMER |
| | | Size A3 Scale NTS U.O.S | Drawing No. J6/03014 Sheet 1 of 18 |

This Drawing Is The Property Of H.S. Jackson & Son (Fencing) Ltd.
 And May Not Be Copied Or Reproduced In Any Way Without Prior Written Permission.