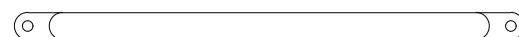
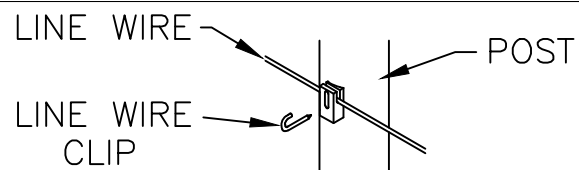
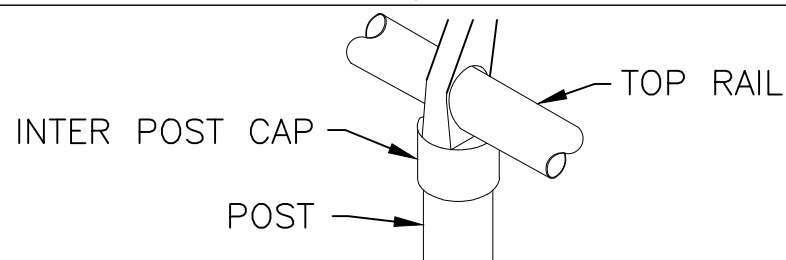
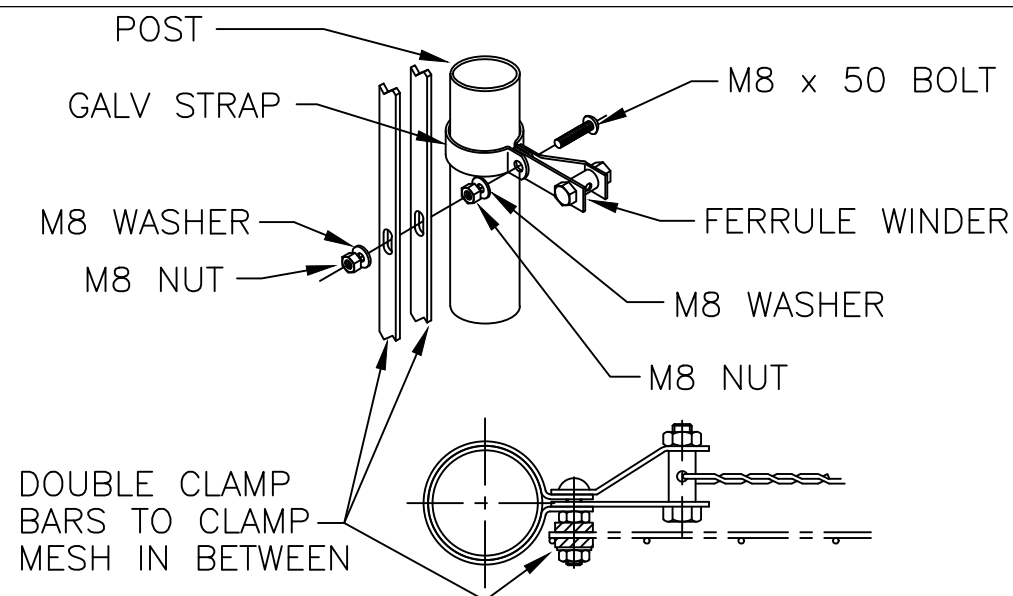
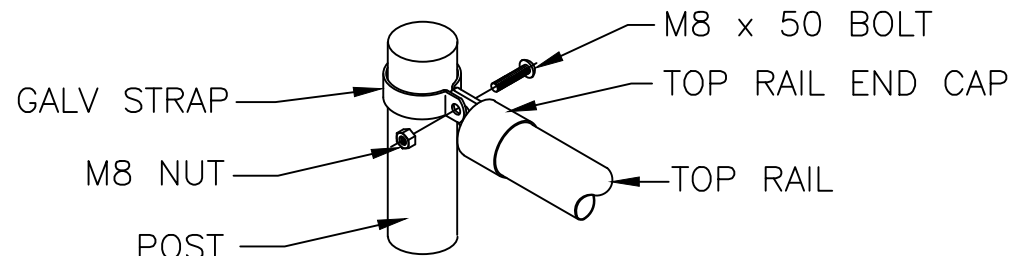
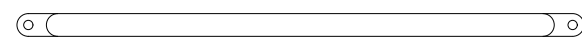


INTERMEDIATE STRAINER INTERMEDIATE/END STRAINER CORNER STRAINER

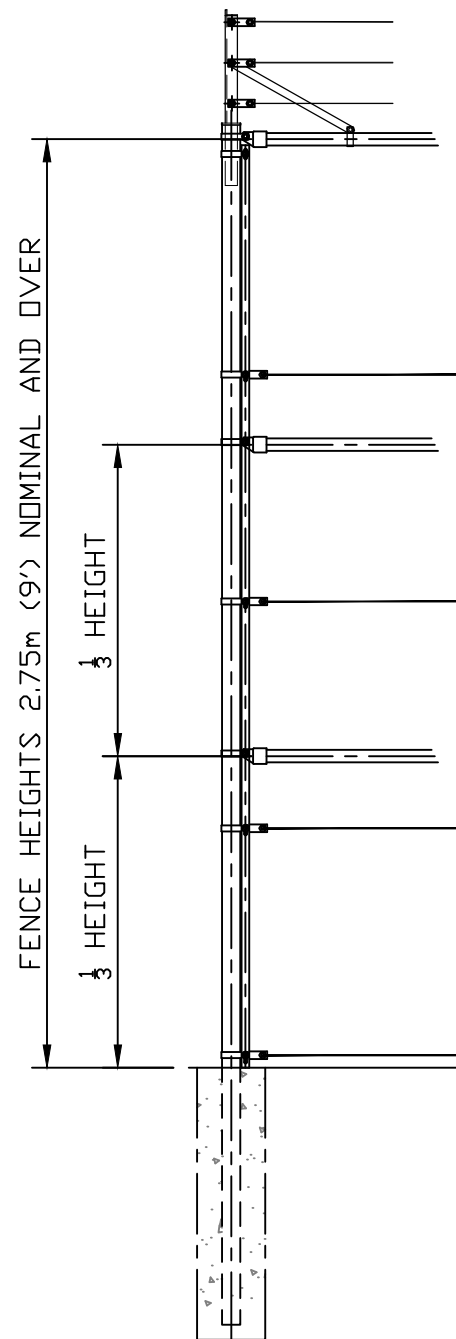
THIS DRAWING IS TO BE USED IN CONJUNCTION WITH INSTALLATION INSTRUCTIONS ON OUR WEBSITE: WWW.JACKSONS-FENCING.CO.UK



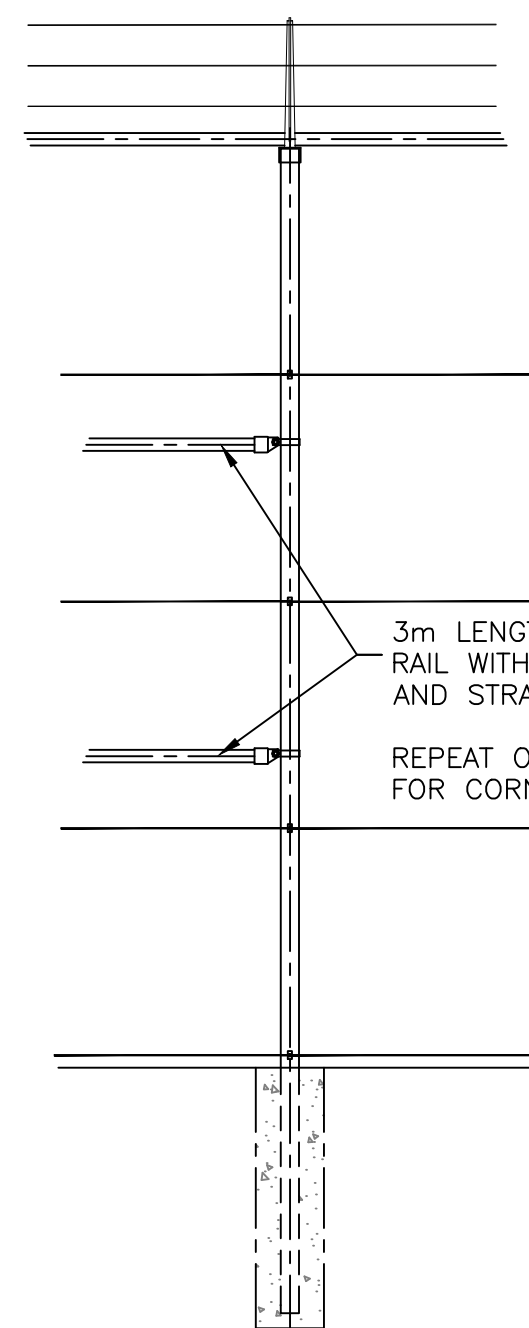
SHORT CAP STRUT 475 LG



LONG CAP STRUT 625 LG



END POST



INTERMEDIATE POST

3m LENGTHS OF TOP RAIL WITH END CAPS AND STRAPS.
REPEAT ON BOTH SIDES FOR CORNER POSTS.

2.75mH NOM AND OVER.

HORIZONTAL STRUT KITS SUPPLIED FOR 10ft HIGH & ABOVE TO BE USED AT END OF RUN WHERE STRAINING. KITS CONSISTS OF 6m TOP RAIL TO BE CUT TO LENGTH & TOP RAIL END CAPS + STRAPS TO BE POSITIONED AT 3rd POINTS

Jacksons Fencing

Stowting Common, Near Ashford, Kent. TN25 6BN
Telephone: 01233 750393
Fax: 01233 750403
www.jacksons-fencing.co.uk
www.jacksons-security.co.uk

This Drawing Is The Property Of H.S. Jackson & Son (Fencing) Ltd, And May Not Be Copied Or Reproduced In Any Way Without Prior Written Permission.

DO NOT SCALE - IF IN DOUBT ASK

02/02/2016 ORIGINAL ISSUE

Drawn	WB	TITLE	Tubular Welded Mesh SYSTEM 5
Date	02/02/2016		
Checked	CJ	CUSTOMER	Drawing No.
Size	A3	Scale	98 J2/01033
			Sheet 2 of 3