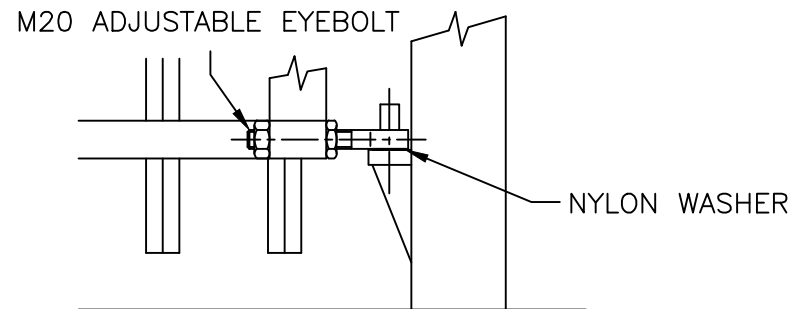


TOP HINGE DETAIL
(SCALE 1:8)



BOTTOM HINGE DETAIL
(SCALE 1:8)

REFER TO SHEET 2 FOR
OPTIONAL ROTASPIKE TOPPING

NOTES.

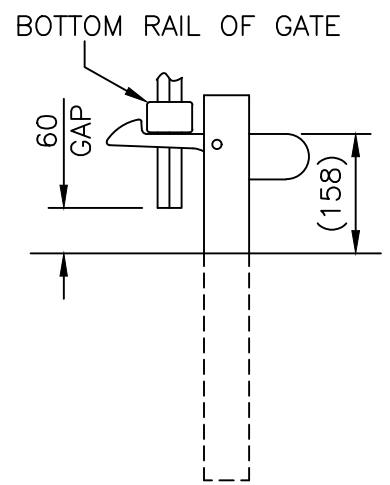
ALL DIMENSIONS ARE IN mm (UNO)
GAPS UNDER GATES & FENCING
ARE NOMINAL DUE TO GROUND LEVELS.
REFER TO DRAWING J1/04047 FOR
GATE SIZE RANGE & DIMENSIONS.

MATERIALS.

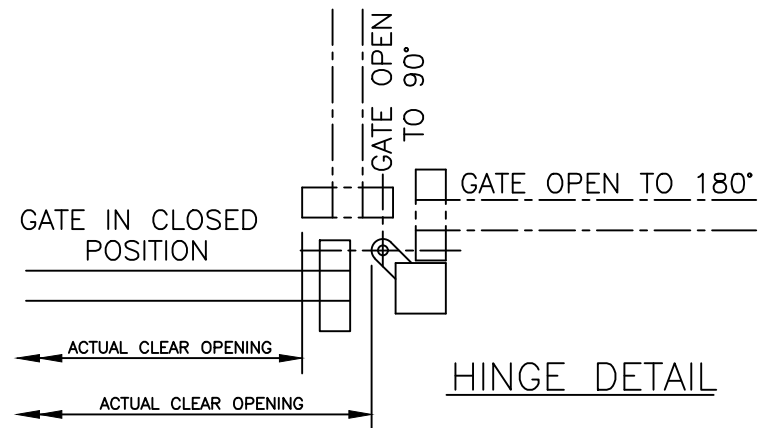
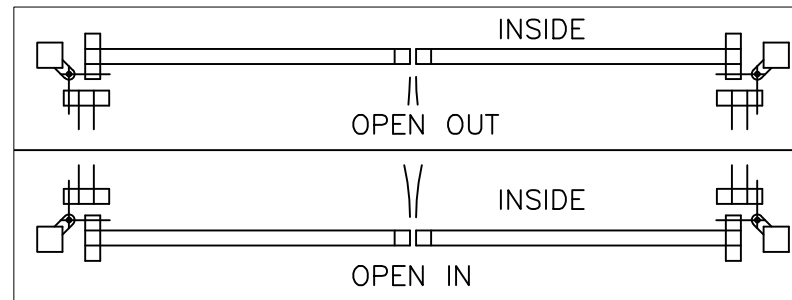
HANG POST: ASSESSED TO SUIT
RAILS: 60 x 40 RHS
STILES: 60 x 60 SHS
PALES: 25 x 25 SHS

FINISH.

GALVANISED TO BS EN ISO 1461
POWDER COATED: IF REQUESTED

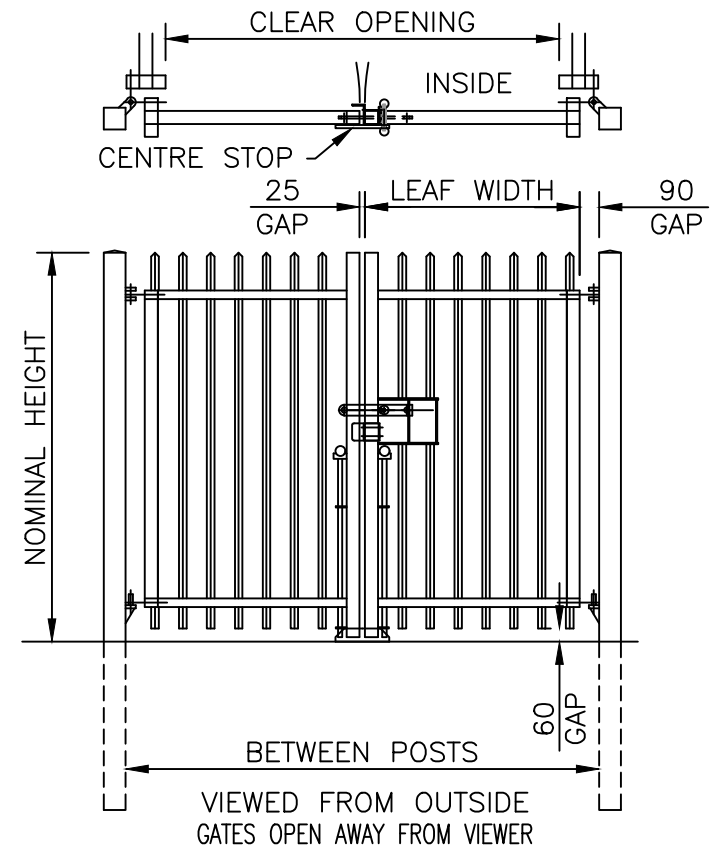


HOLD BACK LATCH
TO HOLD OPEN GATE
(SCALE 1:10)

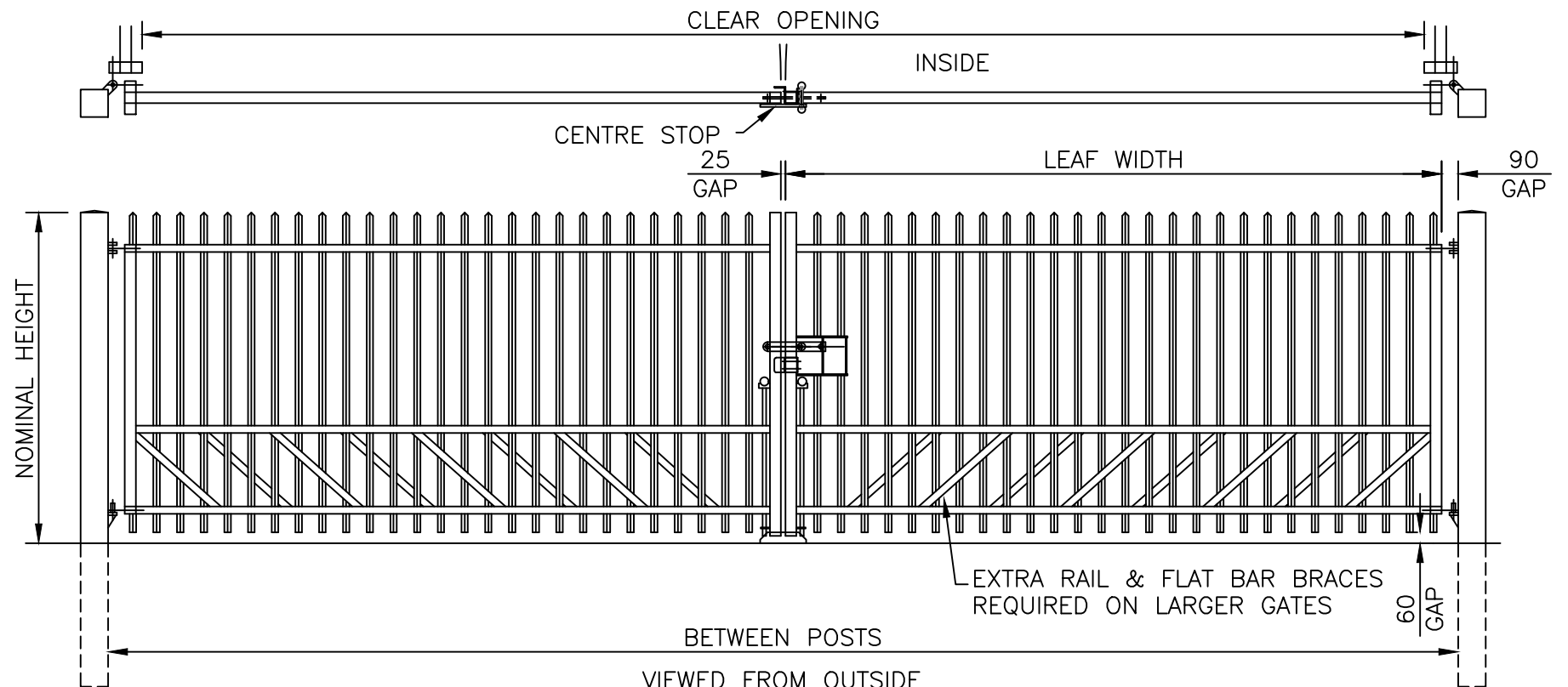


HINGE DETAIL

GATES SECURED USING DROPBOLTS & PADLOCKABLE SLIDE LATCH (PADLOCK NOT SUPPLIED)
FOR OPTIONAL KEY LOCK REFER TO DRAWING J1/02111 FOR DETAILS.



VIEWED FROM OUTSIDE
GATES OPEN AWAY FROM VIEWER



VIEWED FROM OUTSIDE
GATES OPEN AWAY FROM VIEWER

**Jacksons
Fencing**

Stowting Common, Near Ashford,
Kent. TN25 6BN
Telephone: 01233 750393
Fax: 01233 750403
www.jacksons-fencing.co.uk
www.jacksons-security.co.uk

This Drawing Is The Property Of H.S. Jackson & Son (Fencing) Ltd, And May
Not Be Copied Or Reproduced In Any Way Without Prior Written Permission.

DO NOT SCALE - IF IN DOUBT ASK

- ⑦ 27/02/2020 NEW BORDER - LATCH - NOTES
- ⑥ 09/04/13 POINTED PALES
- ⑤ 09/12/10 Notes
- ④ 02/01/09 2nd Sheet Added
- ③ 20/08/08 CHANGED TO 129 PALE PITCH

Drawn	YH
Date	01/07/1996
Checked	CJ
Size	A3
Scale	1:35 U.O.S

TITLE SALES & INSTALLATION DRAWING
BARBICAN DOUBLE GATES

CUSTOMER

ACK No.

Drawing No.

J1/02090
Sheet 1