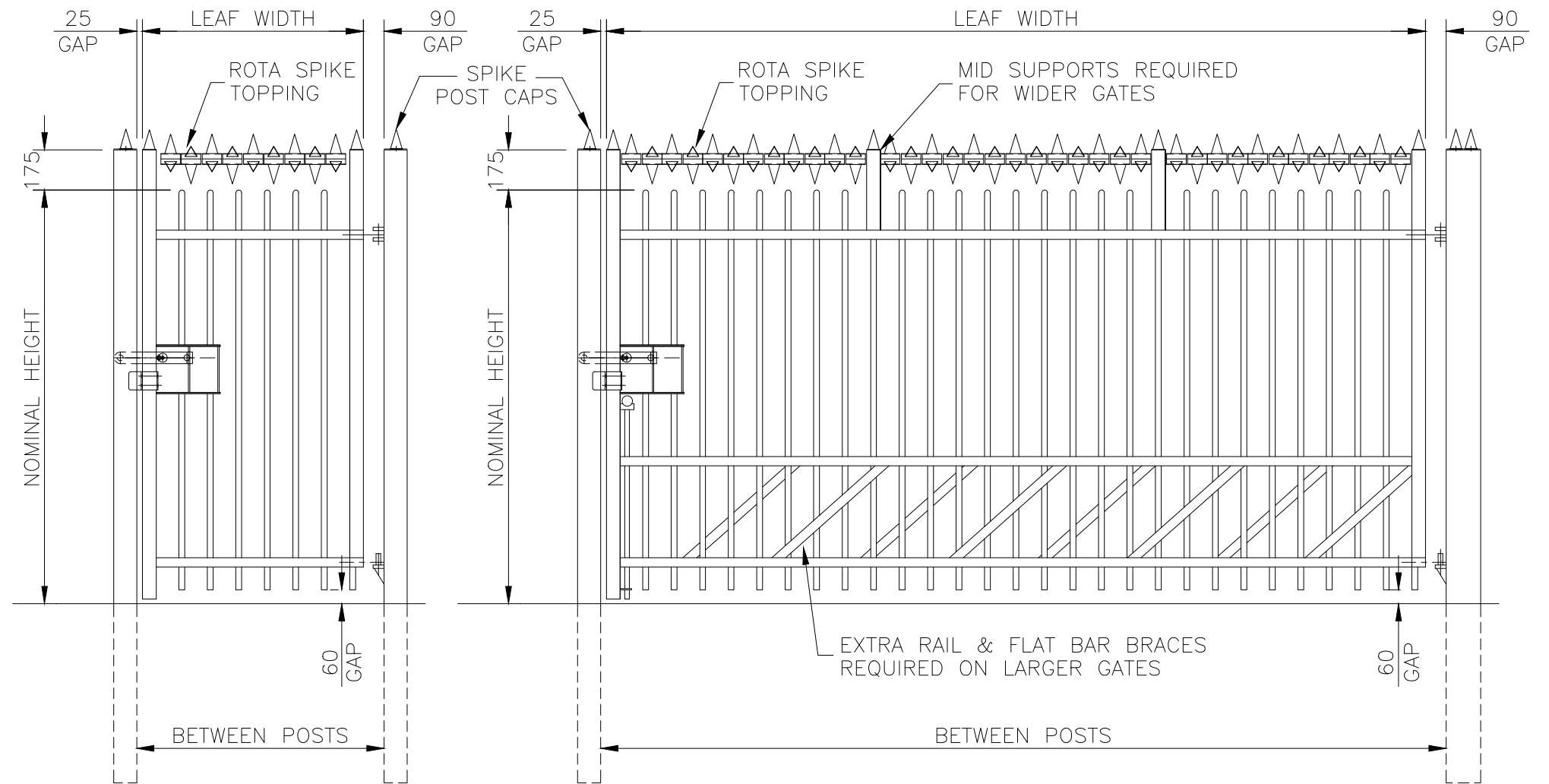


GATES SECURED USING PADLOCKABLE SLIDE LATCH (PADLOCK NOT SUPPLIED)  
FOR OPTIONAL KEY LOCK REFER TO DRAWING J1/02111 FOR DETAILS.



VIEWED FROM OUTSIDE  
GATE OPENS AWAY FROM VIEWER  
RIGHT HAND HANG AS SHOWN  
124 PALE PITCH (AS DRAWN)

VIEWED FROM OUTSIDE  
GATE OPENS AWAY FROM VIEWER  
RIGHT HAND HANG AS SHOWN  
124 PALE PITCH (AS DRAWN)

REFER TO SHEET 1 FOR  
INSTALL DETAILS

**NOTES.**  
ALL DIMENSIONS ARE IN mm (UNO)  
GAPS UNDER GATES & FENCING  
ARE NOMINAL DUE TO GROUND LEVELS.  
REFER TO DRAWING J1/04047 FOR  
GATE SIZE RANGE & DIMENSIONS.

**MATERIALS.**  
HANG POST: ASSESSED TO SUIT  
SLAM POST: 100 x 100 SHS (TYPICALLY)  
RAILS: 60 x 40 RHS  
STILES: 60 x 60 SHS  
PALES: UPTO 2m High:  $\varnothing 25$  CHS @ 124 PALE PITCH  
PALES: ABOVE 2m High:  $\varnothing 32$  CHS @ 129 PALE PITCH

**FINISH.**  
GALVANISED TO BS EN ISO 1461  
POWDER COATED: IF REQUESTED

**Jacksons  
Fencing**

Stowting Common, Near Ashford,  
Kent. TN25 6BN  
Telephone: 01233 750393  
Fax: 01233 750403  
www.jacksons-fencing.co.uk

DO NOT SCALE – IF IN DOUBT ASK

1 02/03/2020 NEW BORDER – LATCH – NOTES  
0 22/09/08 ORIGINAL ISSUE

Drawn SL  
Date 22/09/2008  
Checked CJ  
Size A3  
Scale 1:25  
U.O.S

TITLE SALES DRAWING  
BARBICAN IMPERIAL SINGLE GATES + ROTASPIKE TOPPING  
CUSTOMER  
ACK No.  
Drawing No.  
J1/02150  
Sheet 3

This Drawing Is The Property Of H.S. Jackson & Son (Fencing) Ltd, And May Not Be Copied Or Reproduced In Any Way Without Prior Written Permission.