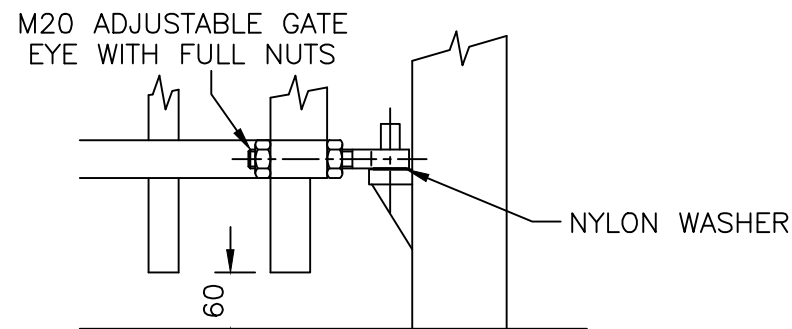
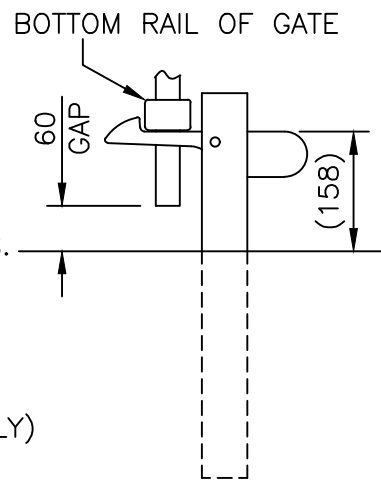


TOP HINGE DETAIL
(SCALE 1:8)



BOTTOM HINGE DETAIL
(SCALE 1:8)

REFER TO SHEET 2 FOR
OPTIONAL ROTASPIKE TOPPING



HOLD BACK LATCH
TO HOLD OPEN GATE
(SCALE 1:10)

NOTES.

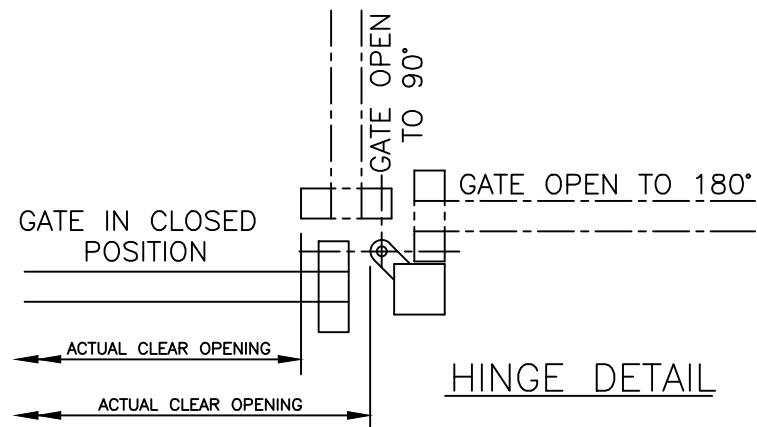
ALL DIMENSIONS ARE IN mm (UNO)
GAPS UNDER GATES & FENCING
ARE NOMINAL DUE TO GROUND LEVELS.
REFER TO DRAWING J1/04047 FOR
GATE SIZE RANGE & DIMENSIONS.

MATERIALS.

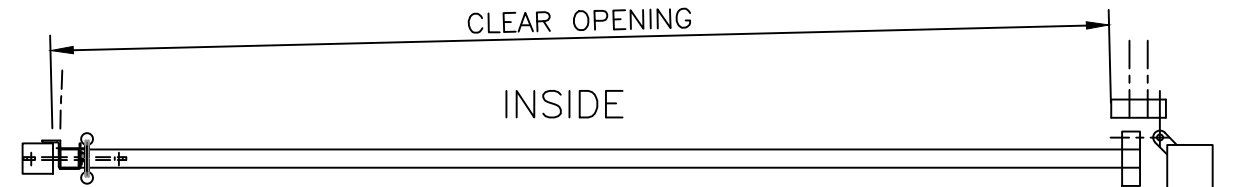
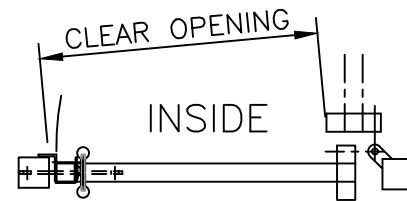
HANG POST: ASSESSED TO SUIT
SLAM POST: 100 x 100 SHS (TYPICALLY)
RAILS: 60 x 40 RHS
STILES: 60 x 60 SHS
PALES: ø32 CHS

FINISH.

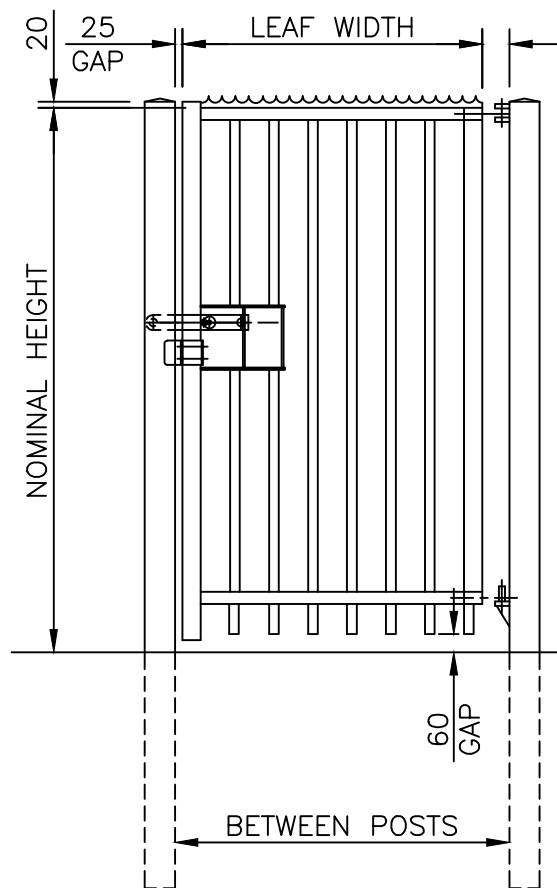
GALVANISED TO BS EN ISO 1461
POWDER COATED: IF REQUESTED



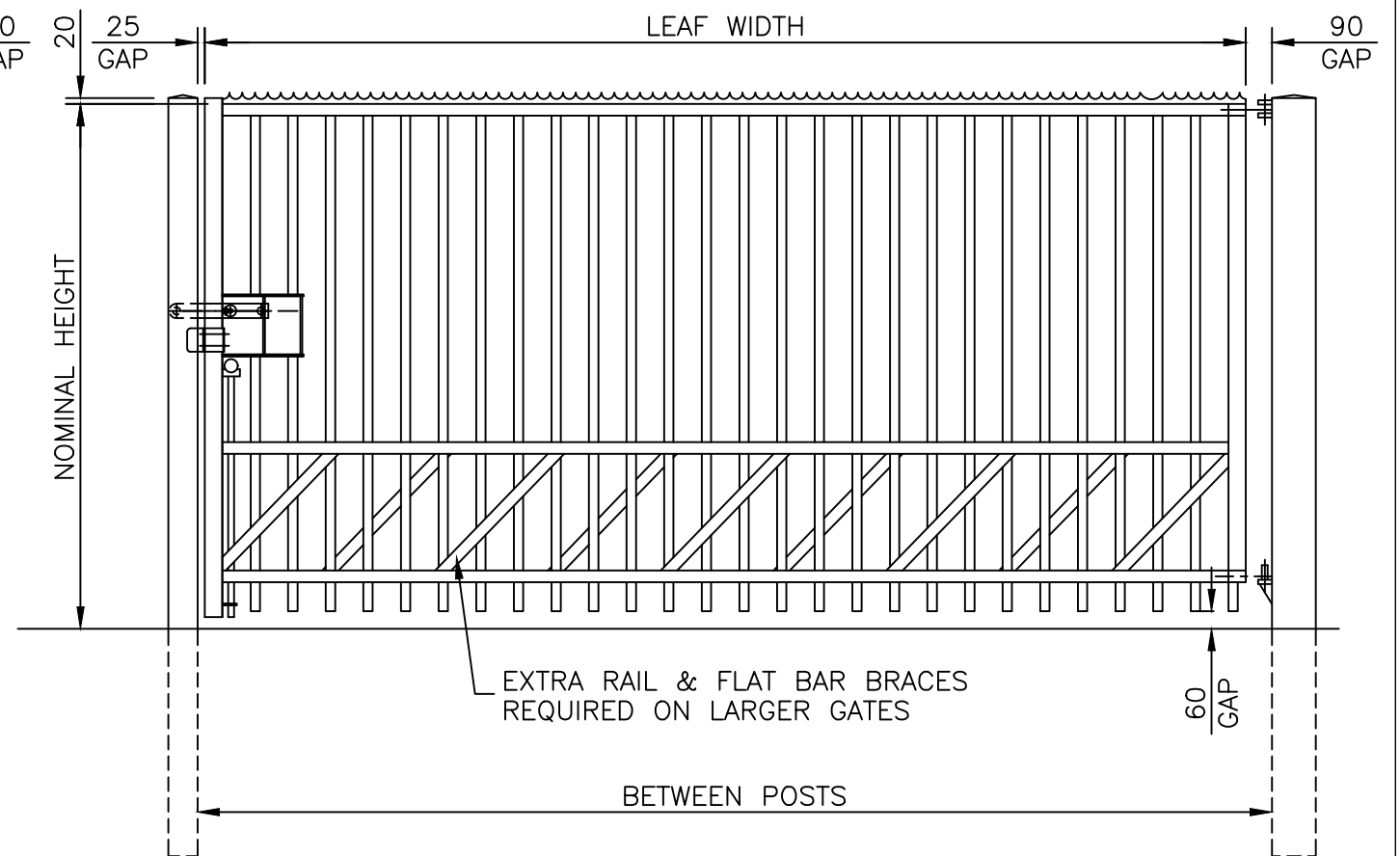
HINGE DETAIL



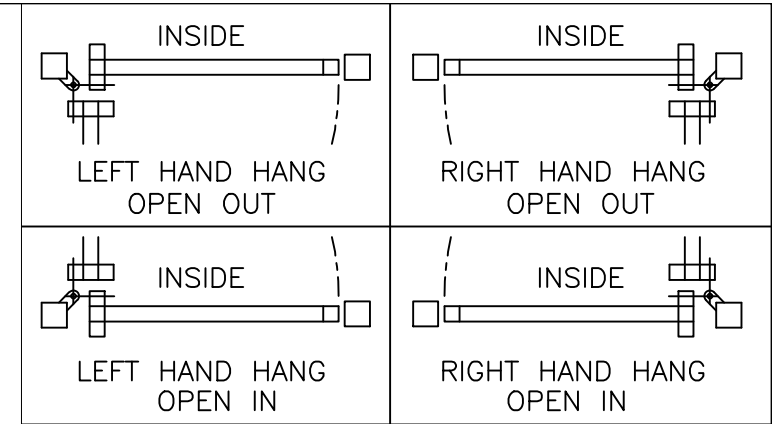
GATES SECURED USING PADLOCKABLE SLIDE LATCH (PADLOCK NOT SUPPLIED)
FOR OPTIONAL KEY LOCK REFER TO DRAWING J1/02111 FOR DETAILS.



VIEWED FROM OUTSIDE
GATE OPENS AWAY FROM VIEWER
RIGHT HAND HANG AS SHOWN



VIEWED FROM OUTSIDE
GATE OPENS AWAY FROM VIEWER
RIGHT HAND HANG AS SHOWN



**Jacksons
Fencing**

Stowting Common, Near Ashford,
Kent. TN25 6BN
Telephone: 01233 750393
Fax: 01233 750403
www.jacksons-fencing.co.uk
www.jacksons-security.co.uk

This Drawing Is The Property Of H.S. Jackson & Son (Fencing) Ltd, And May Not Be Copied Or Reproduced In Any Way Without Prior Written Permission.

DO NOT SCALE - IF IN DOUBT ASK

- ⑥ 24/02/2020 NEW BORDER - LATCH - NOTES
- ⑤ 06/01/11 NOTES
- ④ 21/08/08 UPDATED TO 129 PALE PITCH
- ③ 05/01/06 UPDATED
- ② 21/03/05 DROPBOLT REMOVED

Drawn	YH
Date	01/07/1996
Checked	CJ
Size	A3
Scale	1:25 U.O.S

TITLE	SALES & INSTALLATION DRAWING SENTRY SINGLE GATES	
CUSTOMER		
ACK No.		
Drawing No.	J6/02041 Sheet 1	