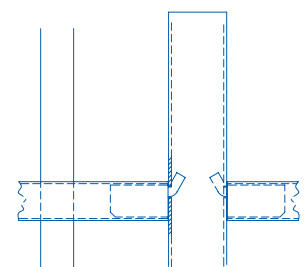


TRI-GUARD®



Tri-Guard® is an innovative range of fencing and gates featuring pales with curved tops, set in clusters of three, joined by feature steel discs to create a decorative appearance with anti-climb and anti-scale performance.

- Posts can be customised for Barbed wire / Razor wire / Rota Spike®
- Pales cut at 45° and curved outwards for anti-climb
- Vertical pale spacing conforms to building regulations for anti-trap
- Unique vandal-proof panel to post connectors
- Panels can be manufactured to accommodate sloping ground
- Anti-climb design
- **25-year service life guarantee**



Post to panel fixings

APPLICATIONS

- ✓ Public buildings
- ✓ Medium - High risk
- ✓ Schools

PANELS

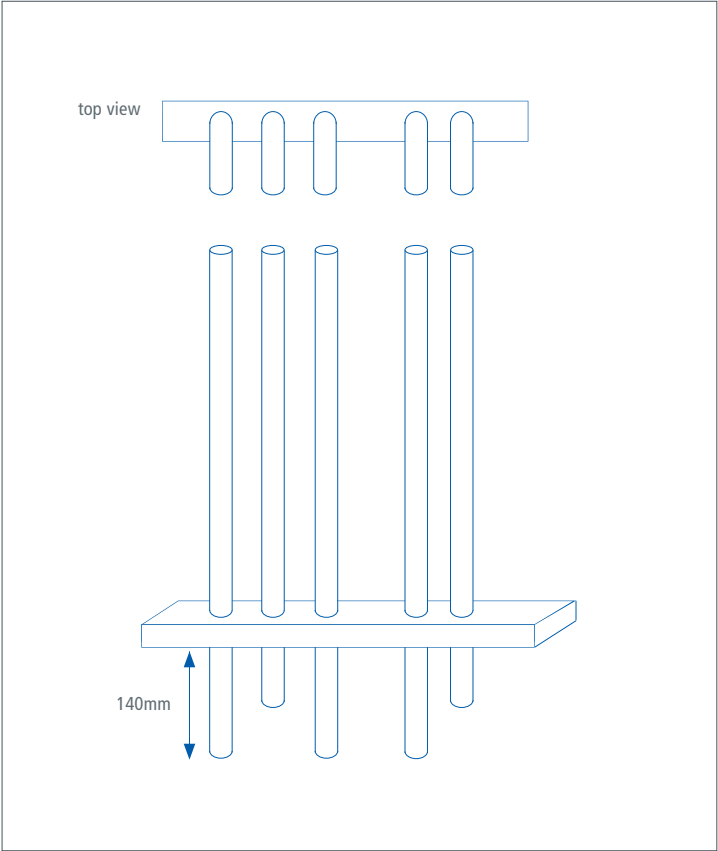
Tri-Guard® panels have high have three horizontal rectangular hollow section rails 50 x 25mm.

The vertical round hollow section 19mm pales are grouped in threes with the top curved over. Metal discs are welded between the pales, one row for 2200mm high and two rows for 2500mm high

and have a maximum of 100mm spacing (complies to British standard).

GATES

Matching gates available



HEIGHT (MM)	POST CENTRES (MM)	POST DIMENSIONS (MM)	OVERALL POST LENGTH (MM)
2200	3010	80 x 60	3000
2500	3010	80 x 60	3000

POST OPTIONS

- Overlength set in concrete as standard
- Baseplated to bolt down onto concrete
- Cranked to suit wall mounting

FINISHES

- Hot dip galvanised to BS EN ISO 1461 as standard
- Hot dip galvanised and powder coated to BS EN 13438
- Marine coat for installations within 500m of salt water or an estuary

STANDARD COLOURS

- Black RAL 9005
- Green RAL 6005
- Other colours are available on request