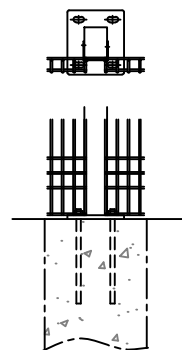


MESH DETAILS  
(SCALE 1:10)

BASEPLATE SLOTTED FOR  
M12 CHEMICAL FIXINGS



BASEPLATED POSTS  
(OPTIONAL)

## NOTES.

ALL DIMENSIONS ARE IN mm (U.N.O)  
GAPS UNDERNEATH GATES & FENCING  
ARE NOMINAL DUE TO GROUND LEVELS.

## Materials.

FENCE POSTS – 80 x 60 RHS

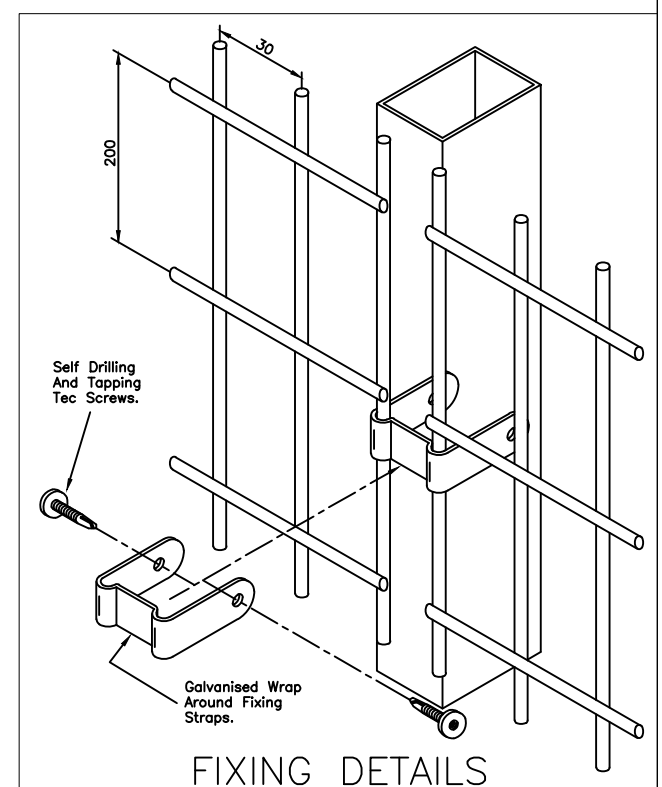
HORIZONTAL WIRES –  $\phi 5\text{mm}$

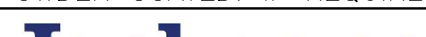
VERTICAL WIRES –  $\phi 5\text{mm}$

Finish.

GALVANISED TO BS EN ISO 1461

POWDER COATED: IF REQUIRED



|   |                                |   |            |                    |                                   |               |               |  |
|---|--------------------------------|---|------------|--------------------|-----------------------------------|---------------|---------------|--|
|  <p>Stowing Common, Near Ashford,<br/>Kent. TN25 6BN<br/>Telephone: 01233 750393<br/>Fax: 01233 750403<br/>www.jacksons-fencing.co.uk<br/>www.jacksons-security.co.uk</p> <p>This Drawing Is The Property Of H.S. Jackson &amp; Son (Fencing) Ltd, And May<br/>Not Be Copied Or Reproduced In Any Way Without Prior Written Permission.</p> | DO NOT SCALE – IF IN DOUBT ASK |   | Drawn      | S.Leeper           | TITLE                             |               | SALES DRAWING |  |
|   |                                |   | Date       | 19/06/2006         | 2.4m HIGH EUROGUARD EXTRA FENCING |               |               |  |
|   |                                |   | Checked    | WB                 | CUSTOMER                          |               | Drawing No.   |  |
|   |                                |   | Size       | A3                 | Scale                             | 1:20<br>U.O.S | ACK No.       |  |
|   |                                | ⑥ | 16/07/2025 | CLIP QTY           |                                   |               | J6/01059      |  |
|   |                                | ⑤ | 20/02/2020 | NEW BORDER + NOTES |                                   |               | Sheet 2       |  |
|   |                                | ④ | 25/06/2018 | BASEPLATE OPTION   |                                   |               |               |  |
|   |                                | ③ | 14/11/15   | Mesh Detail Added  |                                   |               |               |  |
|   |                                | ② | 25/03/11   | 80 x 60 Posts      |                                   |               |               |  |