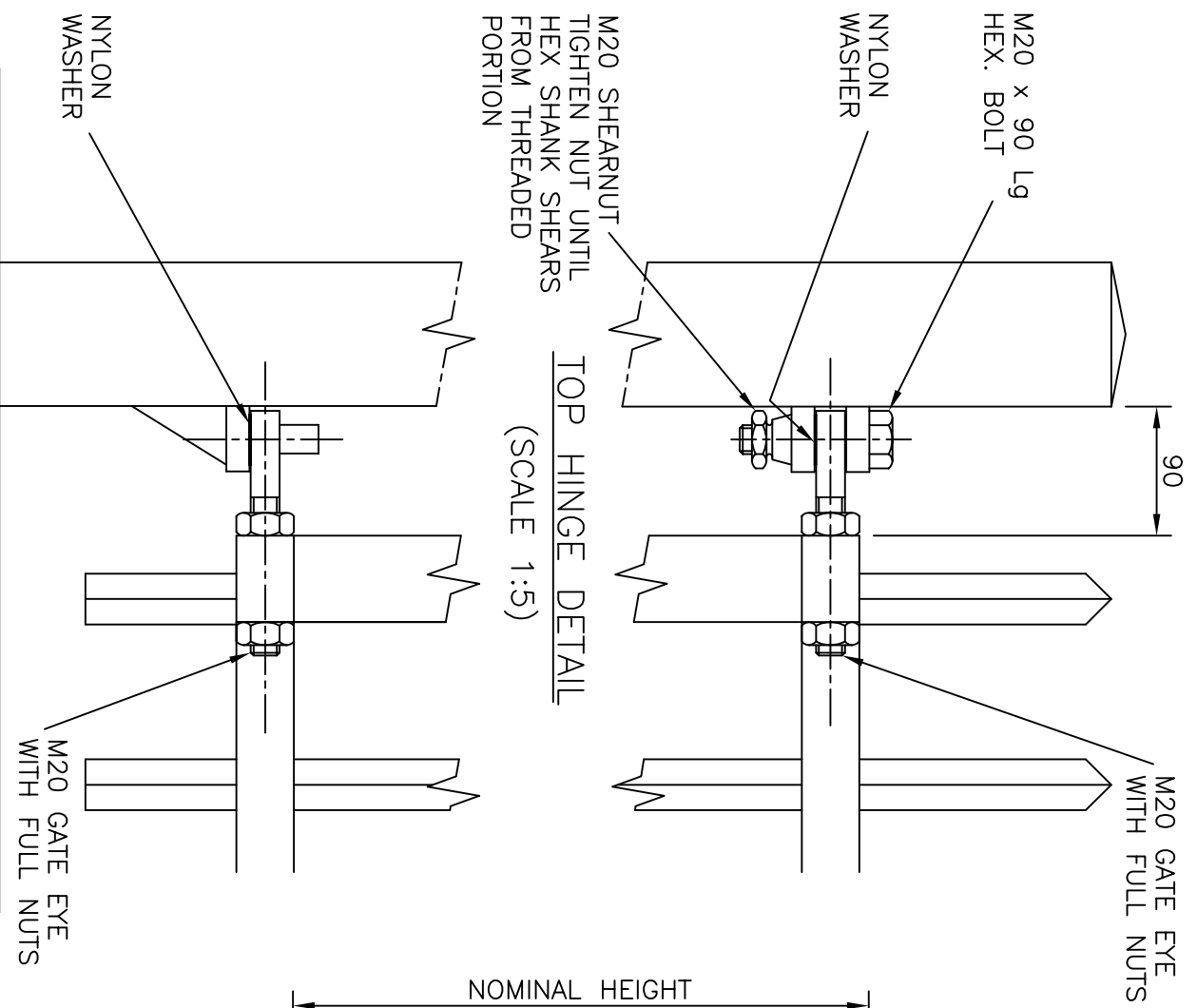
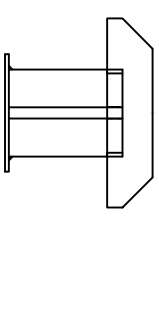
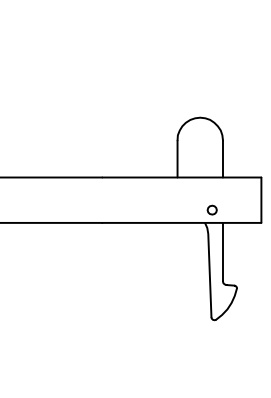
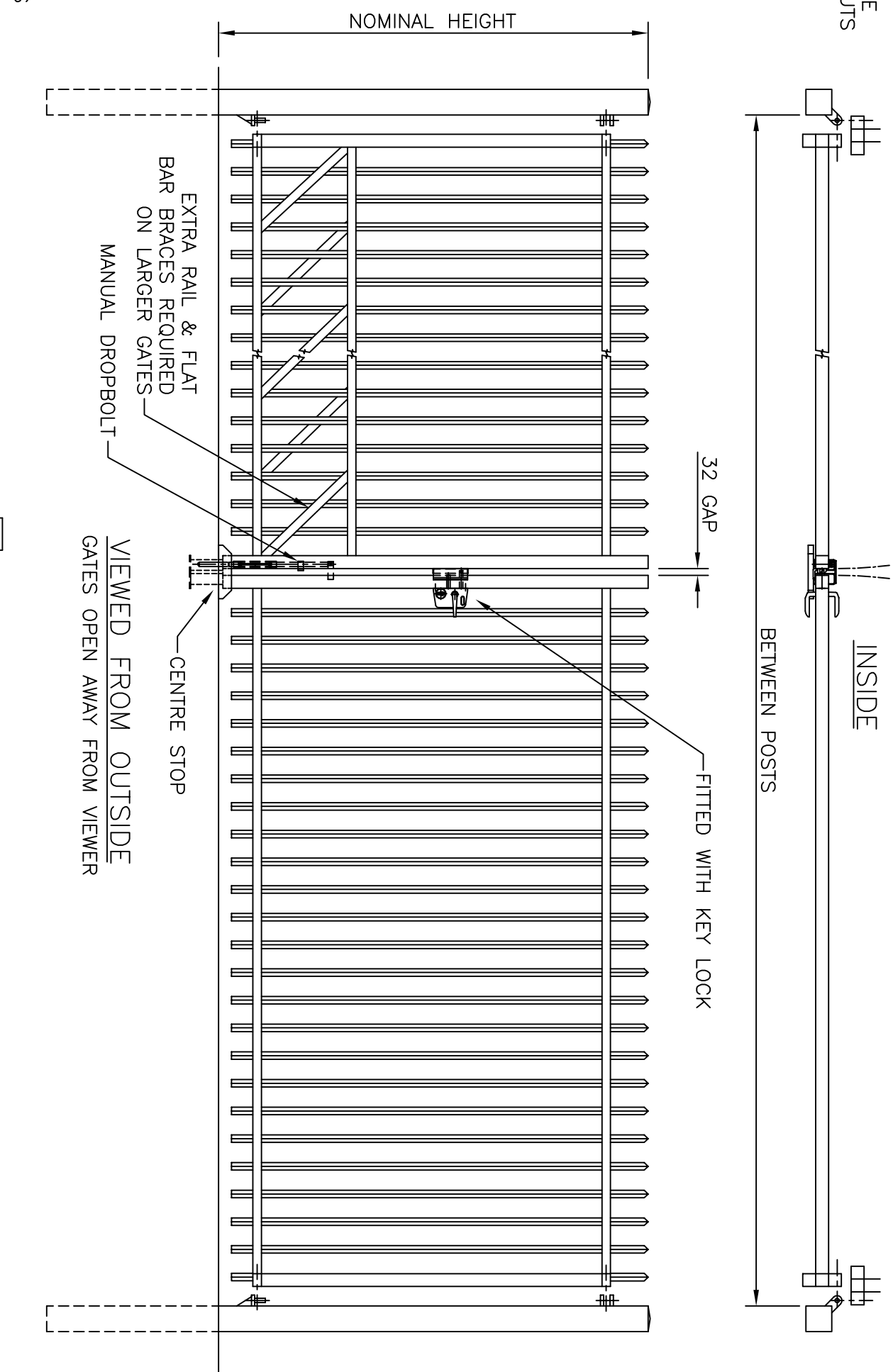


DO NOT SCALE - IF IN DOUBT ASK



TOP HINGE DETAIL
(SCALE 1:5)

BOTTOM HINGE DETAIL
(SCALE 1:5)



MATERIALS

GATE POSTS - 100 x 100 x 3 RHS
 OR 120 x 120 x 3 RHS
 OR 150 x 150 x 4 RHS

RAILS - 60 x 40 x 2 RHS
 SLAM STILE - 60 x 60 x 2 RHS
 HANG STILE - 60 x 60 x 2 RHS
 PALES - 25 x 25 x 1.5 RHS

FINISH

GALVANISED TO BS EN ISO 1461:1999
 AND POWDER COATED IF REQUIRED

ALL DIMENSIONS ARE IN mm (U.N.O)

JACKSONS
FINE FENCING

Stowling Common
 Near Ashford,
 KENT, TN25 6BN
 Telephone : 01233 750393
 Fax: 01233 750403
 Int. Tel : +44 (0)1233 750393

This Drawing Is The Property Of H.S. Jackson & Son (Fencing) Ltd.
 And May Not Be Copied Or Reproduced In Any Way Without Prior Written Permission.

6	09/04/13	POINTED PALES
5	09/12/10	Notes
4	02/01/09	2nd Sheet Added
3	20/08/08	CHANGED TO 129 PALE PITCH
2	21/03/05	DROPBOLTS
1	22/04/03	UPDATED TO DRG SHEET

Drawn	YH	Date	1/07/96
Checked			
Size	A3	Scale	1:25 U.O.S

TITLE	Sales And Installation Drawing For	
CUSTOMER	Pairs Of Barbican Gates With Key Lock	
ACK No.	Drawing No.	96 J1/02090
	Sheet	1