

NOTES.

ALL DIMENSIONS ARE IN mm (U.N.O)
 STRUTS REQUIRED ABOVE 2.75m HIGH
 (1 KIT PER END, 2 KITS PER CORNER)

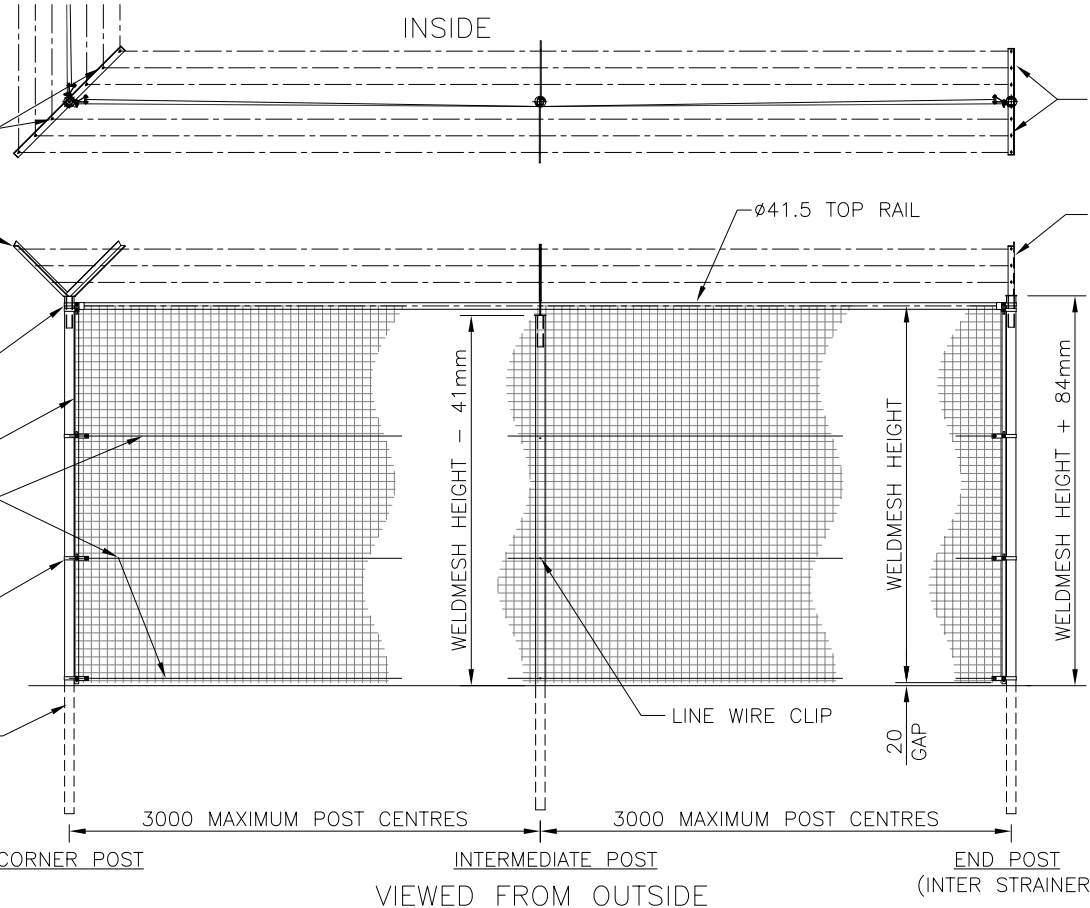
DO NOT SCALE – IF IN DOUBT ASK

MIN HEIGHT 1.8m UPTO MAX HEIGHT 3.6m

Finish.

GALVANISED TO BS EN ISO 1461:1999

Ø10 HOLES FOR FERRULE
 WINDERS TO STRAIN
 BARBED WIRE



Ø10 HOLES FOR FERRULE
 WINDERS TO STRAIN
 BARBED WIRE

ANGLE IRON 'Y' TOP
 FOR END POSTS &
 INTER STRAINERS

ANGLE IRON 'Y' TOP
 FOR END POSTS &
 INTER STRAINERS

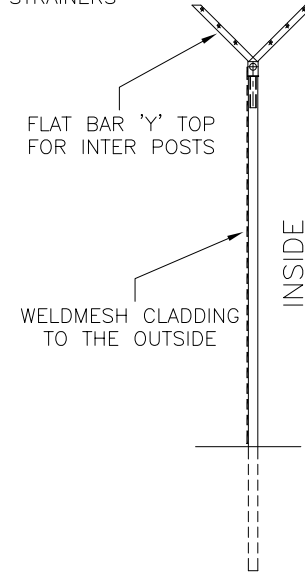
Ø60 STRAP + END CAP
 TO FINISH TOP RAIL TO
 END OR CORNER POSTS

2 nØ. STRETCHER BARS
 TO CLAMP WELDMESH

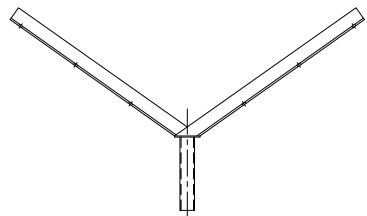
LINE WIRES

Ø60 STRAP + FERRULE
 WINDER TO STRAIN
 LINE WIRES

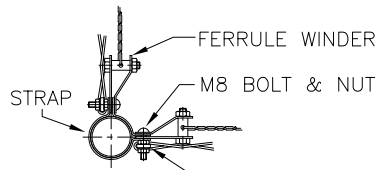
Ø60.3 CHS POSTS



SECTION THRU INTERMEDIATE POST



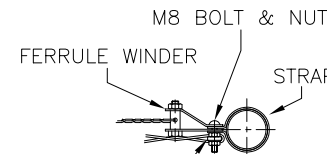
CORNER POST 'Y' TOP



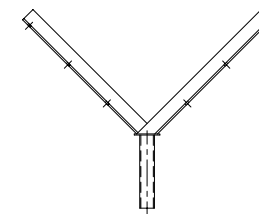
CORNER FITTINGS



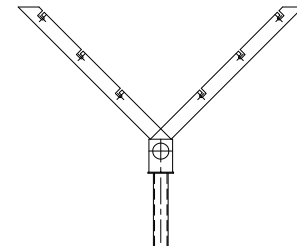
INTER POST



END FITTINGS



END POST 'Y' TOP
 (INTER STRAINER)



INTER POST 'Y' TOP

Jacksons
FINE FENCING

Stowting Common
 Near Ashford,
 KENT. TN25 6BN
 Telephone : 01233 750393
 Fax: 01233 750403
 Int. Tel : +44 (0)1233 750393

- ⑤ 24/04/10
- ④ 22/09/09
- ③ 13/01/07

Strut Kits Req'd @ 2.75m High
 REDRAWN
 REDESIGNED

Drawn WB
 Date 13/01/07
 Checked
 Size A3 Scale 1:35
 U.O.S

TITLE
 TUBULAR WELDED MESH
 SYSTEM 6

CUSTOMER
 ACK No.

Drawing No.
 07 J2/01034
 Sheet 1 of 2