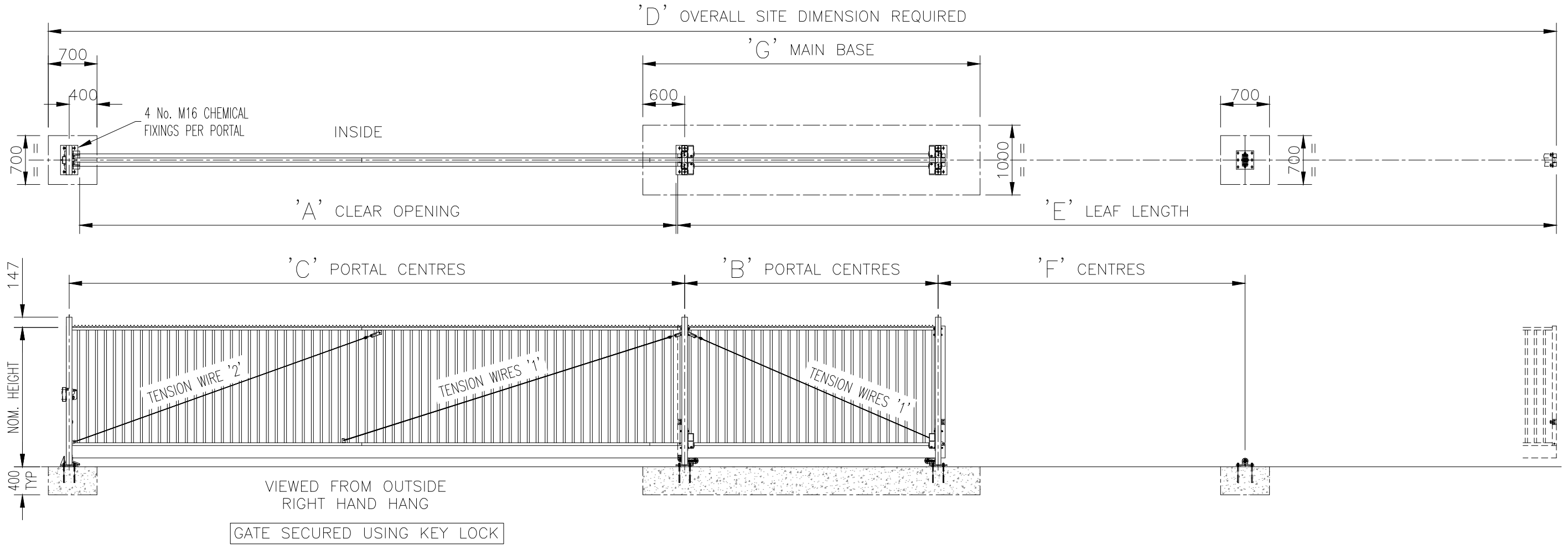


REFER TO DRAWING J1/03087 FOR INSTALLATION DETAILS & PROBLEM SOLVING  
 REFER TO DRAWING J1/03095 FOR TYPICAL PERT LAYOUT DETAILS



	NOMINAL OPENING SIZE	2m	2.5m	3m	3.5m	4m	4.5m	5m	5.5m	6m	6.5m	7m	7.5m	8m	8.5m	9m	9.5m	10m
'A'	ACTUAL CLEAR OPENING	2051	2551	3051	3551	4051	4551	5051	5551	6051	6551	7051	7551	8051	8551	9051	9551	10051
'B'	HANG PORTAL CENTRES	1234	1250	1266	1411	1556	1701	1975	2249	2265	2539	2813	2829	3361	3635	3780	3925	4715
'C'	HANG/CLOSE PORTAL CENTRES	2326	2826	3326	3826	4326	4826	5326	5826	6326	6826	7326	7826	8326	8826	9326	9826	10326
'D'	OVERALL SITE DIMENSION	6226	7242	8258	9403	10548	11693	12967	14241	15257	16531	17805	18821	20353	21627	22772	23917	25707
'E'	TOTAL LEAF LENGTH	3700	4216	4732	5377	6022	6667	7441	8215	8731	9505	10279	10795	11827	12601	13246	13891	15181
'F'	SUPPORT WHEEL CENTRES	1250	1500	1750	1900	2100	2350	2650	2900	3150	3400	3650	3900	4150	4400	4700	4900	5000
'G'	MAIN BASE SIZE	2434	2450	2466	2611	2756	2901	3175	3449	3465	3739	4013	4029	4561	4835	4980	5125	5915
	TENSION WIRE REQUIRED	NONE	NONE	NONE	NONE	NONE	1	1	1	1	1	1	1	1	1 & 2	1 & 2	1 & 2	1 & 2

**NOTES.** ALL DIMENSIONS ARE IN mm (UNO)  
 FOUNDATION SIZES ARE THE MINIMUM REQUIRED ASSUMING GROUND BEARING CAPACITY OF 100kN/m<sup>2</sup>  
 DEVIATION FROM DATUM LEVEL AT TOP OF GATE FOUNDATIONS NOT TO EXCEED ±10  
 NOMINAL RUNNING CLEARANCE UNDER GATE IS 125mm  
 M16 STUDDING TO BE LEFT 75mm ABOVE FOUNDATION LEVEL  
 M16 NUTS SHOULD BE INSTALLED ABOVE & BELOW BASEPLATES  
 ALLOW 20mm GROUT FOR LEVELLING PORTALS  
**MATERIALS.**  
 PORTALS: 80 x 80 x 3.6 SHS  
 RUNNING TUBE: ø178 x 5 CHS  
 RAILS: 60 x 40 x 2 RHS  
 STILES: 60 x 60 x 2 SHS  
 PALES: ø32 x 1.5 CHS  
 TUBES, RAILS, PALES & POSTS UPTO 60 x 60 x 2 etc M.STEEL ERW to BS. EN 10305 PT 3/5 E220 + CR2 + S1 BLACK MATERIAL  
 GATE POSTS & POSTS LARGER THAN 60 x 60 x 2 EN 10219 - S235JR  
 ANGLE IRON & FLAT BAR BS EN 10025 - S275JR  
 CHANNELS etc BS EN 1002 - S275JR  
**FINISH.**  
 GALVANISED TO BS EN ISO 1461  
 POWDER COATED: IF REQUESTED  
 STANDARD HEIGHTS INCLUDE 1.25m, 1.5m, 1.8m, 2m & 2.5m

<h1>Jacksons</h1> <h2>FINE FENCING</h2> <p>Stowing Common        Near Ashford,        KENT. TN25 6BN        Telephone : 01233 750393        Fax: 01233 750403        Int. Tel : +44 (0)1233 750393</p>	DO NOT SCALE - IF IN DOUBT ASK		Drawn	WB	TITLE SENTRY CANTILEVER SLIDING SINGLE GATE 129 PITCH MANUAL CRIB SHEET	
			Date	04/12/13		
	Checked	CJ	CUSTOMER		Drawing No. J6/03014 Sheet 1 of 18	
	Size	A3				

This Drawing Is The Property Of H.S. Jackson & Son (Fencing) Ltd.  
 And May Not Be Copied Or Reproduced In Any Way Without Prior Written Permission.

04/12/13 Original Issue