



Port security at Tilbury2, the UK's newest port

**Jacksons
Fencing**

Products

- Perimeter Intrusion Detection Systems

Background

The Port of Tilbury, situated on the River Thames is the UK's fastest growing and the largest of the eight ports owned by Forth Ports. Situated just 22 nautical miles east of central London, it is ideally placed to handle cargo for London and the South East, with easy access to the M25. The port has an annual throughput of 16 million tonnes per year, with an estimated value of around £8.7 billion. It is the main UK port for handling the importation of paper, as well as grain and bulks, cruises, and property solutions.

Tilbury2 opened in May 2020 and is the UK's most modern and largest unaccompanied freight ferry terminal offering a multimodal (rail, road, sea, river), lower carbon route to the biggest consumer market in Europe and largest industrial bases in Britain, London and the South East.

Despite the challenges around the global pandemic restrictions, the freight ferry and rail terminals opened on schedule to support high volumes and market-leading turnaround times, with the rest of the new port – including the country's largest construction materials processing hub – due to complete in Q3 2021.

The Port of Tilbury is one of the UK's greenest ports and has a commitment to reducing its environmental impact.. Most of its electricity is generated through its four wind turbines, with ongoing investment into power, water, and fuel saving solutions. With this in mind, it made sense to choose a manufacturer which also has a focus on sustainability. Jacksons Fencing offers a 25-year guarantee on all steel and timber fencing and gates, made possible by the expert processes and quality finishes that go into making our products.

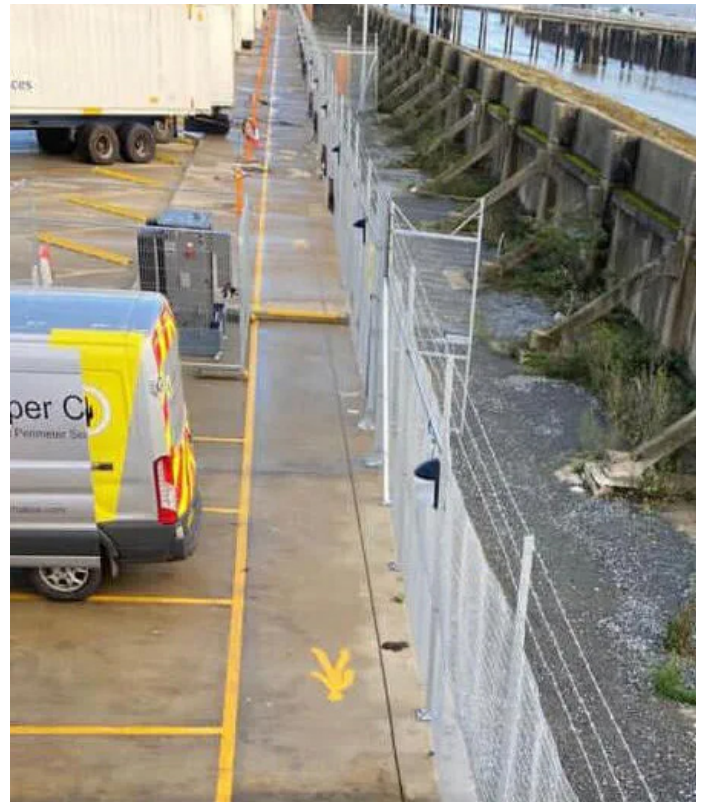
Solution

As a supplier of the FenceSecure system, we worked with our partners, Harper Chalice, to install the Perimeter Intrusion Detection System (PIDS) around the existing fencing at Tilbury2.

The fence-mounted system consists of a piezoelectric sensor cable which is attached to the fence, and detects attempts to cut, climb, jack, or vandalise the system, sending audible signals and vibrations to a seismic analyser. It has exceeded the required standards for tests by UK home Office and other Government tests for reliability, false alarms, and detection, and is approved for use on CNI and HM Prison sites.

FenceSecure can be installed on most types of security fencing, including chain link, welded mesh, and vertical bar railings, to provide early warning of any intrusion attempt. The system also has no topographical limitations. PIDS are a discreet security measure, and are ideal when used as part of an integrated security strategy as a highly reliable form of detection.

With valuable and essential goods passing through the port every day, the upgrades to security will help to protect the operations and ensure that they continue to run smoothly and reduce delays.



For further information on products featured visit: www.jacksons-security.co.uk

