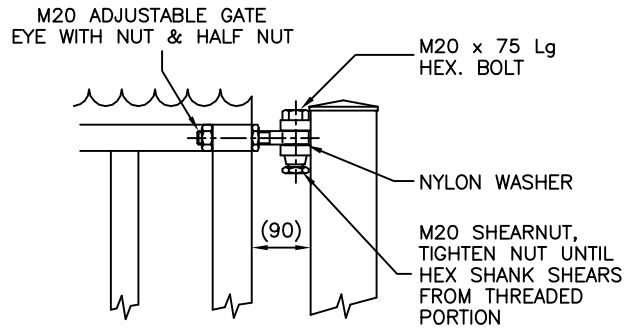
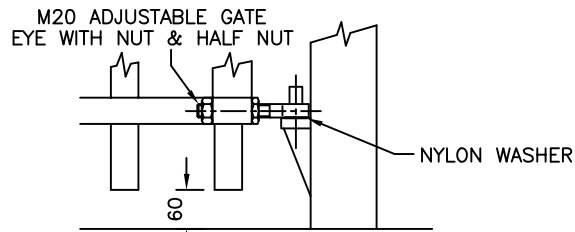


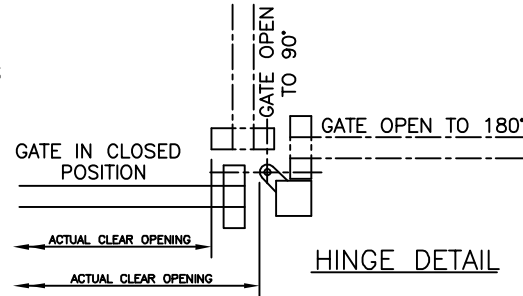
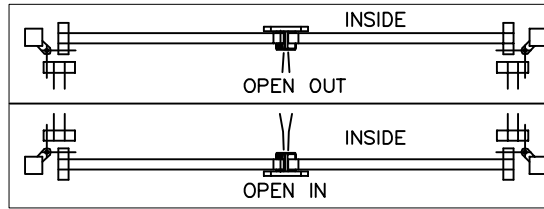
DO NOT SCALE - IF IN DOUBT ASK



TOP HINGE DETAIL  
(SCALE 1:8)

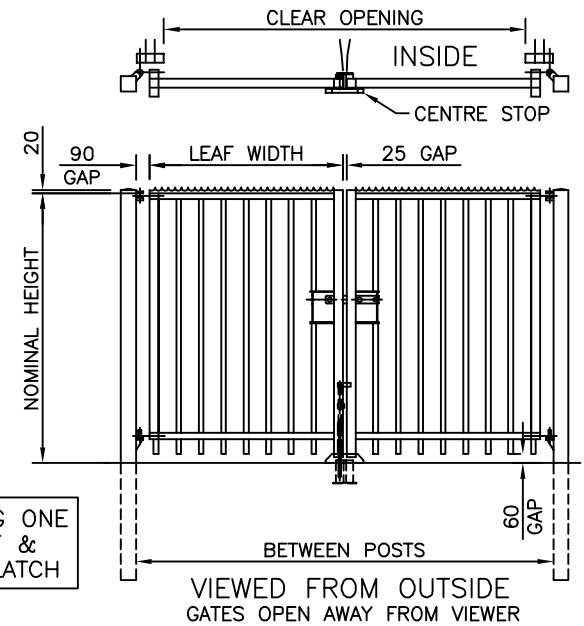


BOTTOM HINGE DETAIL  
(SCALE 1:8)

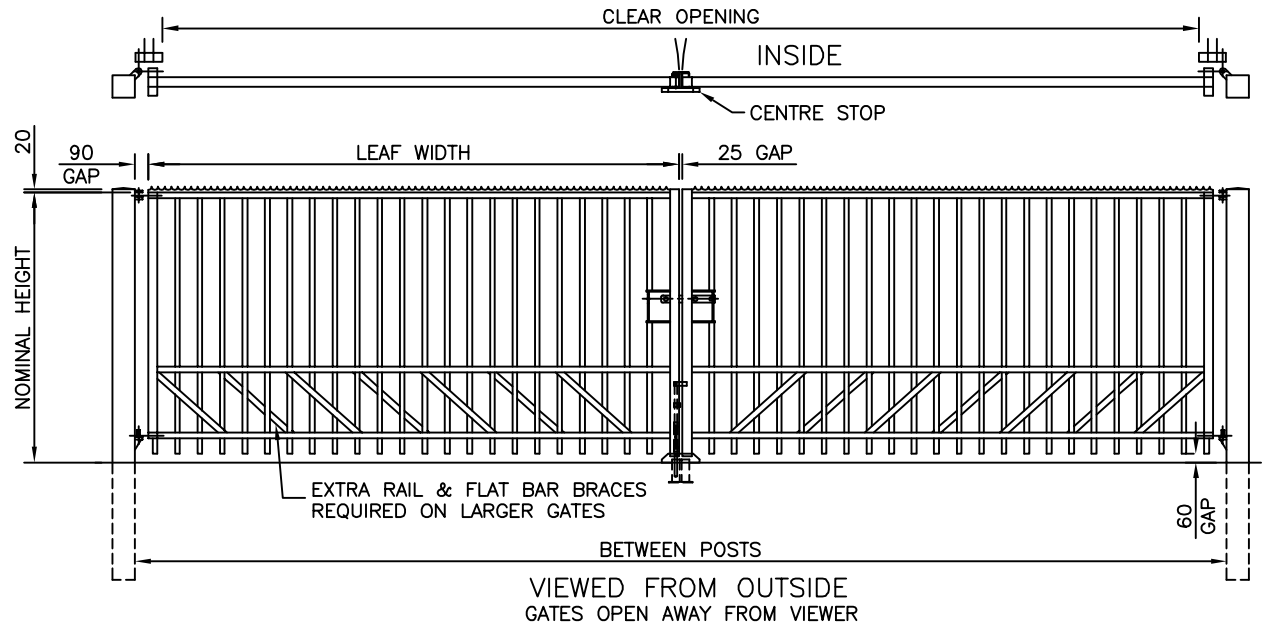


HINGE DETAIL

GATES SECURED USING ONE ANTI-LIFT DROPBOLT & PADLOCKABLE SLIDE LATCH



VIEWED FROM OUTSIDE  
GATES OPEN AWAY FROM VIEWER



VIEWED FROM OUTSIDE  
GATES OPEN AWAY FROM VIEWER

**NOTES.**

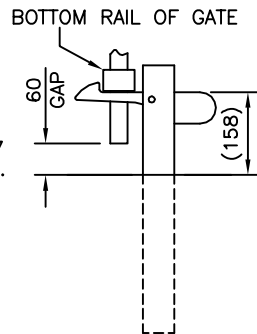
ALL DIMENSIONS ARE IN mm (U.N.O)  
GAPS UNDERNEATH GATES IS BASED UPON THE SITE BEING LEVEL.  
PLEASE REFER TO DRAWING J1/04027 FOR GATE SIZE RANGE & DIMENSIONS.

**Materials.**

HANG POST - 100 x 100 x 3 SHS  
OR 120 x 120 x 3 SHS  
OR 150 x 150 x 4 SHS  
RAILS - 60 x 40 x 2 RHS  
STILES - 60 x 60 x 2 RHS  
PALES - Ø32 x 1.5 CHS

**Finish.**

GALVANISED TO BS EN ISO 1461:1999  
POWDER COATED IF REQUIRED



HOLD BACK LATCH  
TO HOLD OPEN GATE  
(SCALE 1:10)

**Jacksons**  
**FINE FENCING**

Stowting Common  
Near Ashford,  
KENT. TN25 6BN  
Telephone : 01233 750393  
Fax: 01233 750403  
Int. Tel : +44 (0)1233 750393

⑤ 06/01/06  
④ 21/03/05  
① 2/12/97  
① 1/07/96

UPDATED  
DROPBOLTS REMOVED  
RAILS REVISED  
Original Issue

Drawn YH  
Date 1/07/96  
Checked  
Size A3  
Scale 1:35  
U.O.S

TITLE SALES & INSTALLATION DRAWING FOR  
DOUBLE SENTRY GATES (PAIR)

CUSTOMER

Drawing No.

96 J6/02042

ACK No.

This Drawing Is The Property Of H.S. Jackson & Son (Fencing) Ltd.  
And May Not Be Copied Or Reproduced In Any Way Without Prior Written Permission.