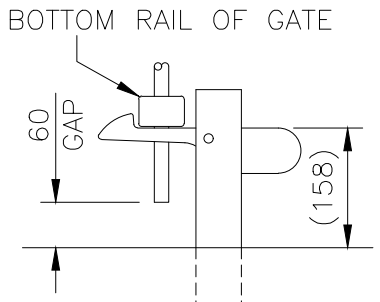
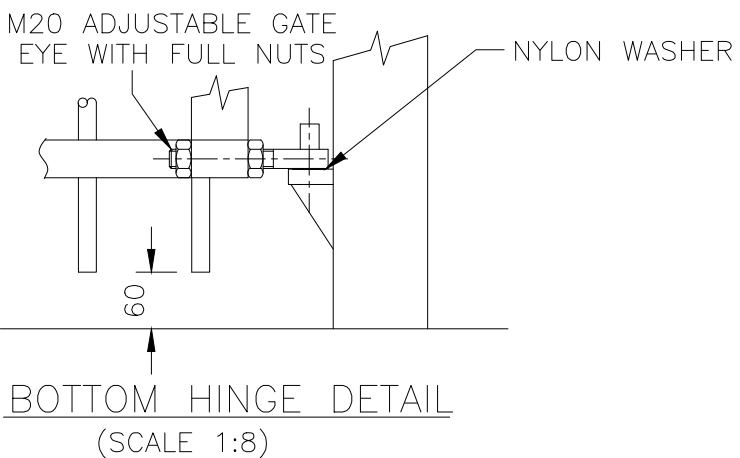
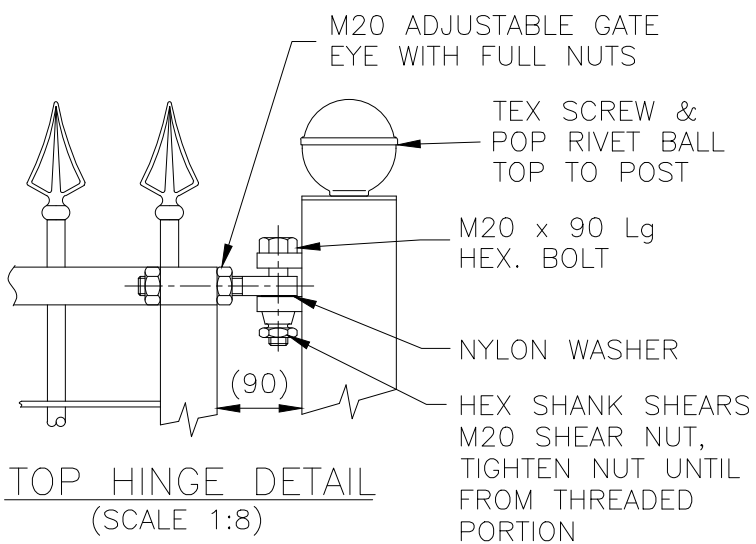
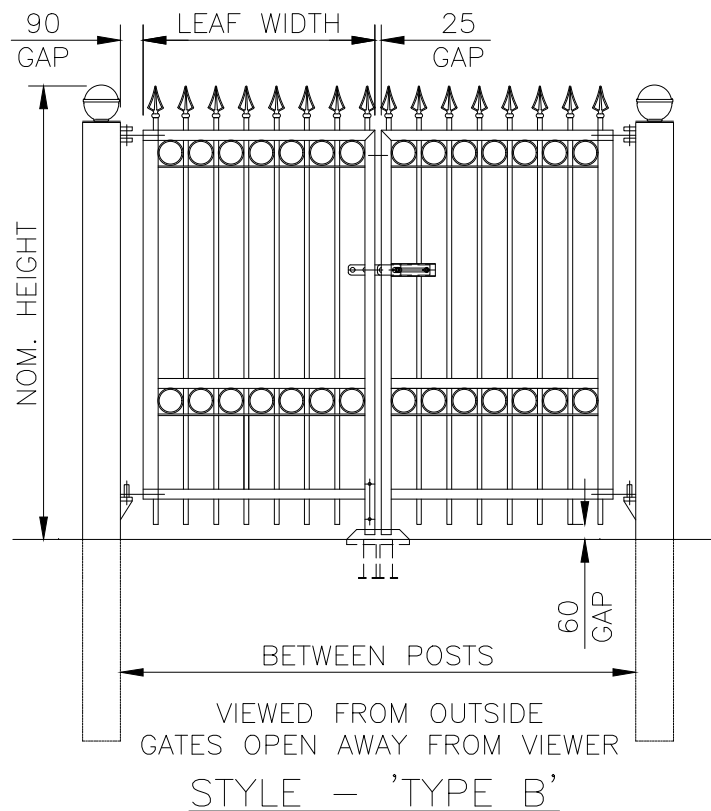
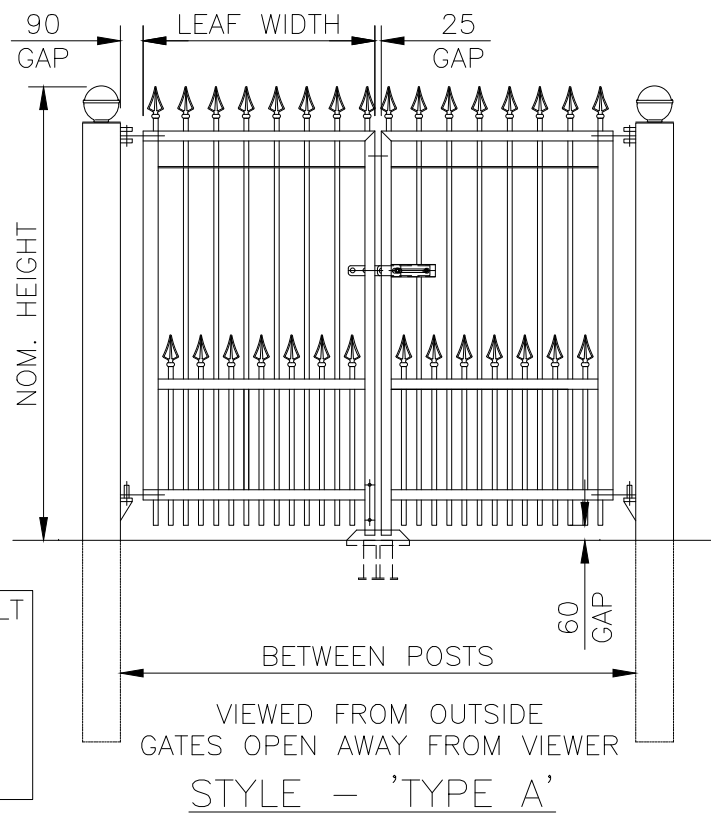
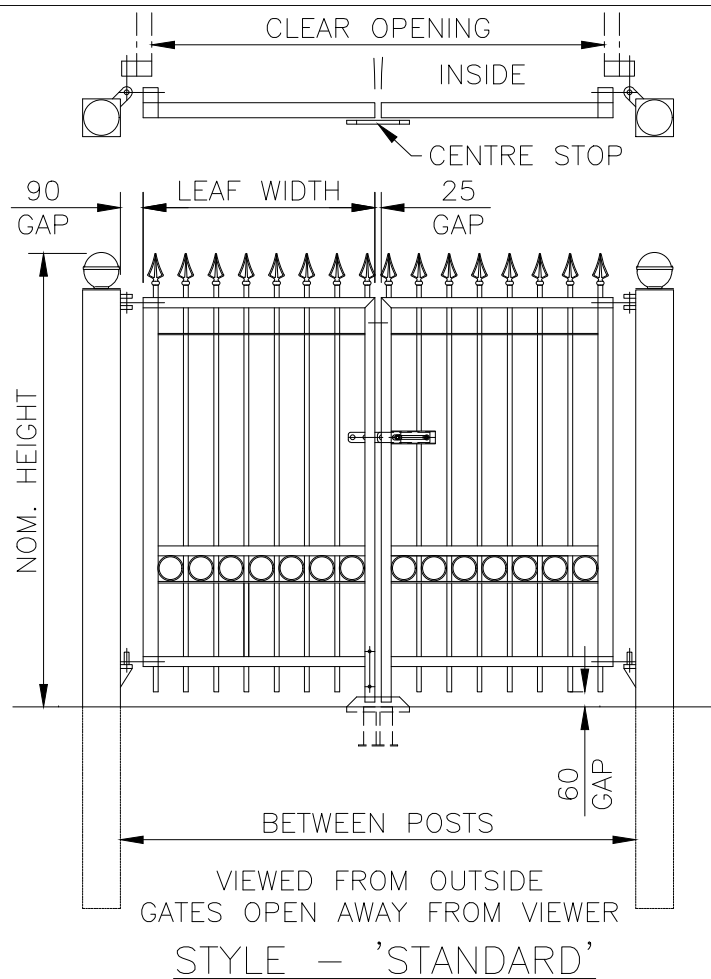


DOUBLE GATE SIZES			
NOMINAL WIDTH	BETWEEN POSTS	CLEAR OPENING	LEAF WIDTH
2m	2045	1795	920
—	2285	2035	1040
2.5m	2525	2285	1160
—	2765	2515	1280
3m	3005	2755	1400
—	3245	2995	1520
3.5m	3485	3235	1640
—	3725	3475	1760
4m	3965	3715	1880
—	4205	3955	2000
4.5m	4445	4195	2120
—	4685	4435	2240
5m	4925	4675	2360
—	5165	4915	2480
5.5m	5405	5155	2600
—	5645	5395	2720
6m	5885	5635	2840
—	6125	5875	2720
6.5m	6365	6115	2840

STANDARD HEIGHTS.  
1m, 1.2m, 1.5m,  
1.8m, 2m & 2.5m



HOLD BACK LATCH  
TO HOLD OPEN GATE  
(SCALE 1:10)



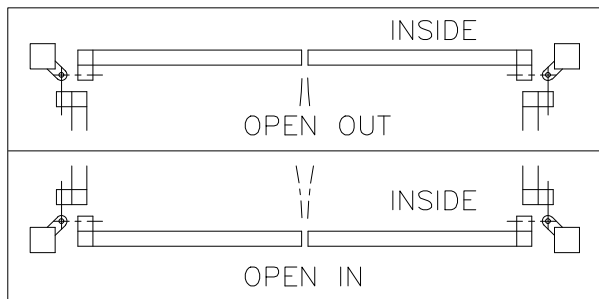
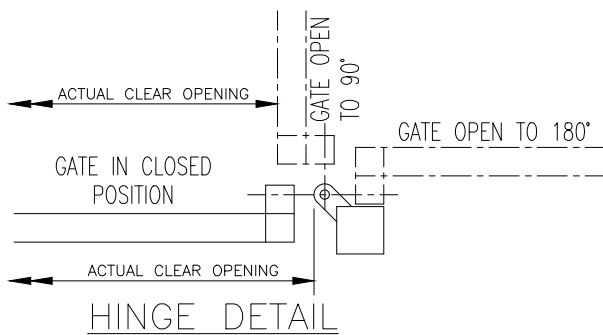
GATES SECURED USING ONE DROPBOLT & PADLOCKABLE SLIDE LATCH (PADLOCK NOT SUPPLIED) FOR OPTIONAL KEY LOCK REFER TO DRAWING J1/02111 FOR DETAILS.

NOTES.

ALL DIMENSIONS ARE IN mm (UNO)  
GAPS UNDER GATES & FENCING ARE NOMINAL DUE TO GROUND LEVELS.

MATERIALS.

HANG POST: 150 x 150 SHS TYPICALLY (ASSESSED TO SUIT SITE LOCATION)  
GATE RAILS: 60 x 40 RHS & 60 x 6 MS FLAT  
SLAM STILE: 60 x 40 RHS  
HANG STILE: 60 x 60 SHS  
PALES: ø19 CHS  
RINGS: ø100  
FINIALS: 'SAXON' ARROWHEAD  
FINISH.  
GALVANISED TO BS EN ISO 1461  
POWDER COATED: IF REQUESTED



Drawn EE	Checked CJ	25/03/2020 NEW BORDER - LATCH
Date 07/06/2011	Size A3	Scale 1:30 U.O.S.
		08/03/18 FINIAL UPDATES
		07/06/2011 Original Issue

**Jacksons Fencing**

Stowling Common, Near Ashford, Kent. TN25 6BN  
Telephone: 01233 750393 Fax: 01233 750403  
Int. Tel: +44 (0)1233 750393  
www.jacksons-fencing.co.uk

DO NOT SCALE - IF IN DOUBT ASK  
TITLE SALES & INSTALLATION DRAWING  
ORNAMENTAL LEVEL TOP DOUBLE GATES

CUSTOMER

Drawing No.

ORN/2026

ACK No.

Sheet 1