

DO NOT SCALE – IF IN DOUBT ASK

**NOTES**

ALL DIMENSIONS ARE IN mm (U.N.O)  
GAPS UNDERNEATH GATES & FENCING  
ARE NOMINAL DUE TO GROUND LEVELS.

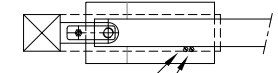
**MATERIALS**

POSTS – 80 x 80 x 3.6 RHS  
RAILS – 60 x 40 x 2 RHS  
SLAM STILE – 60 x 60 x 2 RHS  
HANG STILE – 60 x 60 x 2 RHS  
PALES – 25 x 25 x 1.5 RHS

**FINISH**

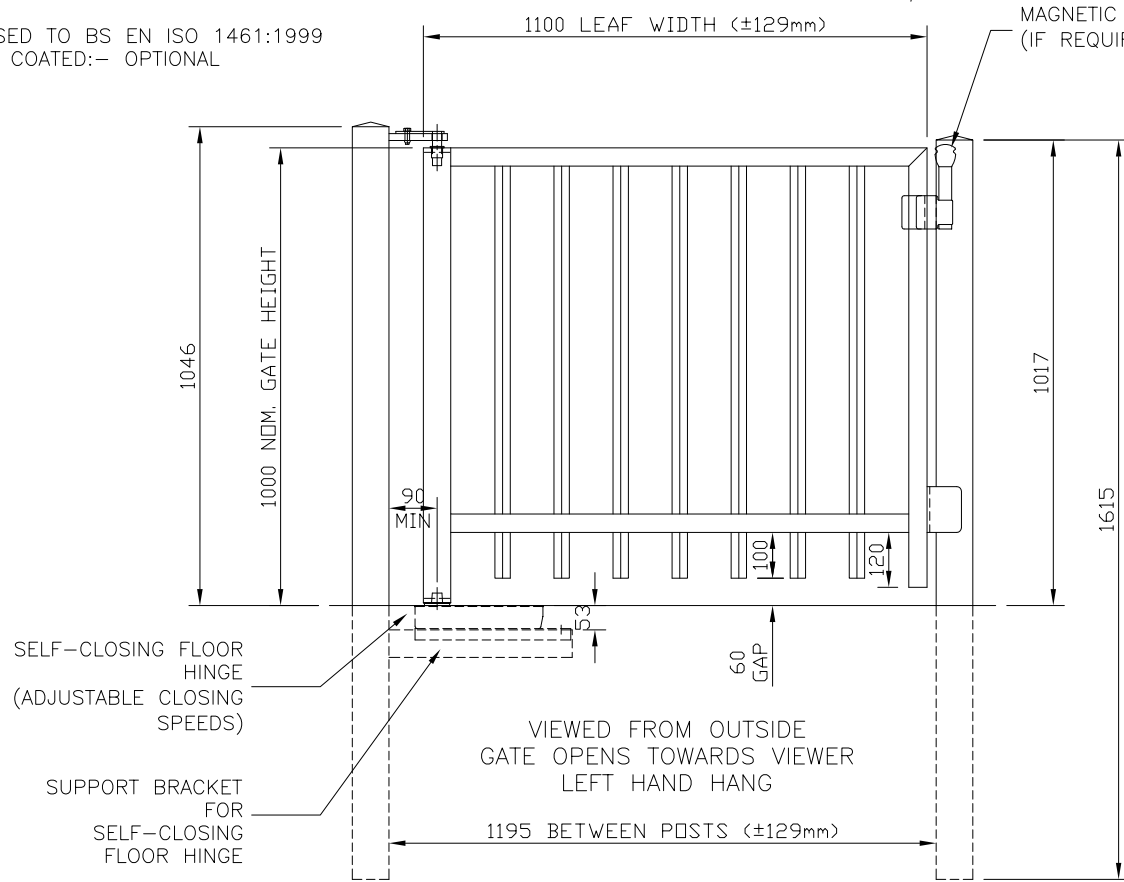
GALVANISED TO BS EN ISO 1461:1999  
POWDER COATED:- OPTIONAL

	BETWEEN POSTS	LEAF SIZE	CLEAR OPENING
	937	842	802
	1066	971	931
STD	1195	1100	1060



CLOSING SPEED SCREW  
LATCHING SPEED SCREW

ADJUSTMENT CAN BE MADE TO THE  
CLOSING SPEED USING THE TWO SCREWS  
LOCATED UNDER THE COVER PLATE



OILITE BUSH TO BE INSTALLED IN THE  
TOP OF HANG STILE, THEN POSITION  
UNDER HINGE LUG & INSTALL Ø20  
STAINLESS STEEL HINGE PIN & PLATE.  
ONCE INSTALLED, SECURE USING AN  
M8 BOLT & SHEAR NUT

GATE LEAF TO BE LOCATED ON FLOOR  
HINGE & SUPPORTED UNTIL TOP  
HINGE IS INSTALLED

SELF-CLOSING FLOOR HINGE TO BE  
POSITIONED BELOW TOP HINGE  
(FINE ADJUSTMENT OF THE FLOOR  
HINGE CAN BE DONE BY REMOVING  
THE COVER PLATE TO ACCESS THE  
ADJUSTER BOLTS INSIDE THE CASING)

TEX SCREW TO HOLD FLOOR  
HINGE IN POSITION WHILST  
CONCRETE IS SETTING

**Jacksons**  
**FINE FENCING**

Stowting Common  
Near Ashford,  
KENT. TN25 6BN  
Telephone : 01233 750393  
Fax: 01233 750403  
Int. Tel : +44 (0)1233 750393

This Drawing Is The Property Of H.S. Jackson & Son (Fencing) Ltd.  
And May Not Be Copied Or Reproduced In Any Way Without Prior Written Permission.

06/01/11 NOTES  
04/04/09 Original Issue

Drawn Liam  
Date 04/04/09  
Checked  
Size A3 Scale 1:12 u.o.s

TITLE S/L Metal Playtime Gate with  
Self-Closing Floor Hinge (Sales Dwg)  
CUSTOMER  
Drawing No. J8/04012  
ACK No.