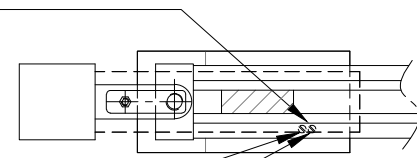
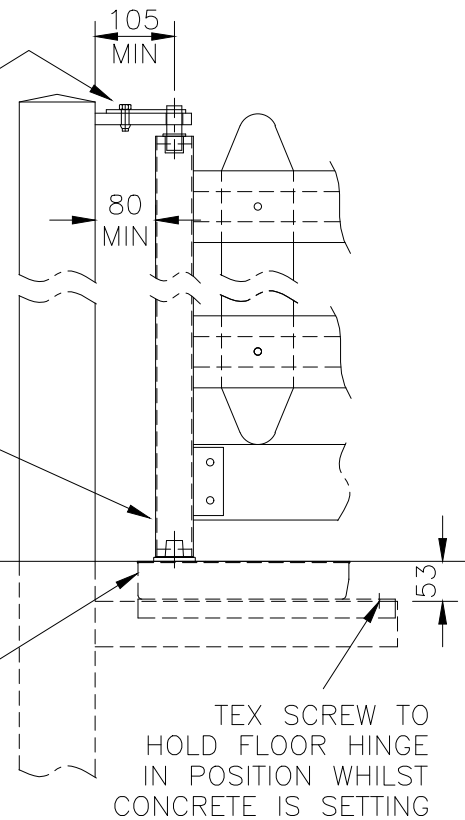


ADJUSTMENT CAN BE MADE TO THE CLOSING SPEED USING THE TWO SCREWS LOCATED UNDER THE COVER PLATE



CLOSING SPEED SCREW  
LATCHING SPEED SCREW

BUSH TO BE INSTALLED IN THE TOP OF HANG STILE, THEN POSITION UNDER HINGE LUG & INSTALL HINGE PIN & PLATE. ONCE INSTALLED SECURED USING M8 HEX HEAD BOLT & SHEAR NUT.



GATE LEAF TO BE LOCATED ON FLOOR HINGE & SUPPORTED UNTIL TOP HINGE IS INSTALLED.

SELF CLOSING FLOOR HINGE TO BE POSITIONED BELOW TOP HINGE (FINE ADJUSTMENT OF THE FLOOR HINGE CAN BE DONE BY REMOVING THE COVER PLATE TO ACCESS THE ADJUSTER BOLTS INSIDE THE CASING)

**SELF CLOSING FLOOR HINGE INSTALL DETAILS**  
(SCALE 1:10)

**NOTES.**

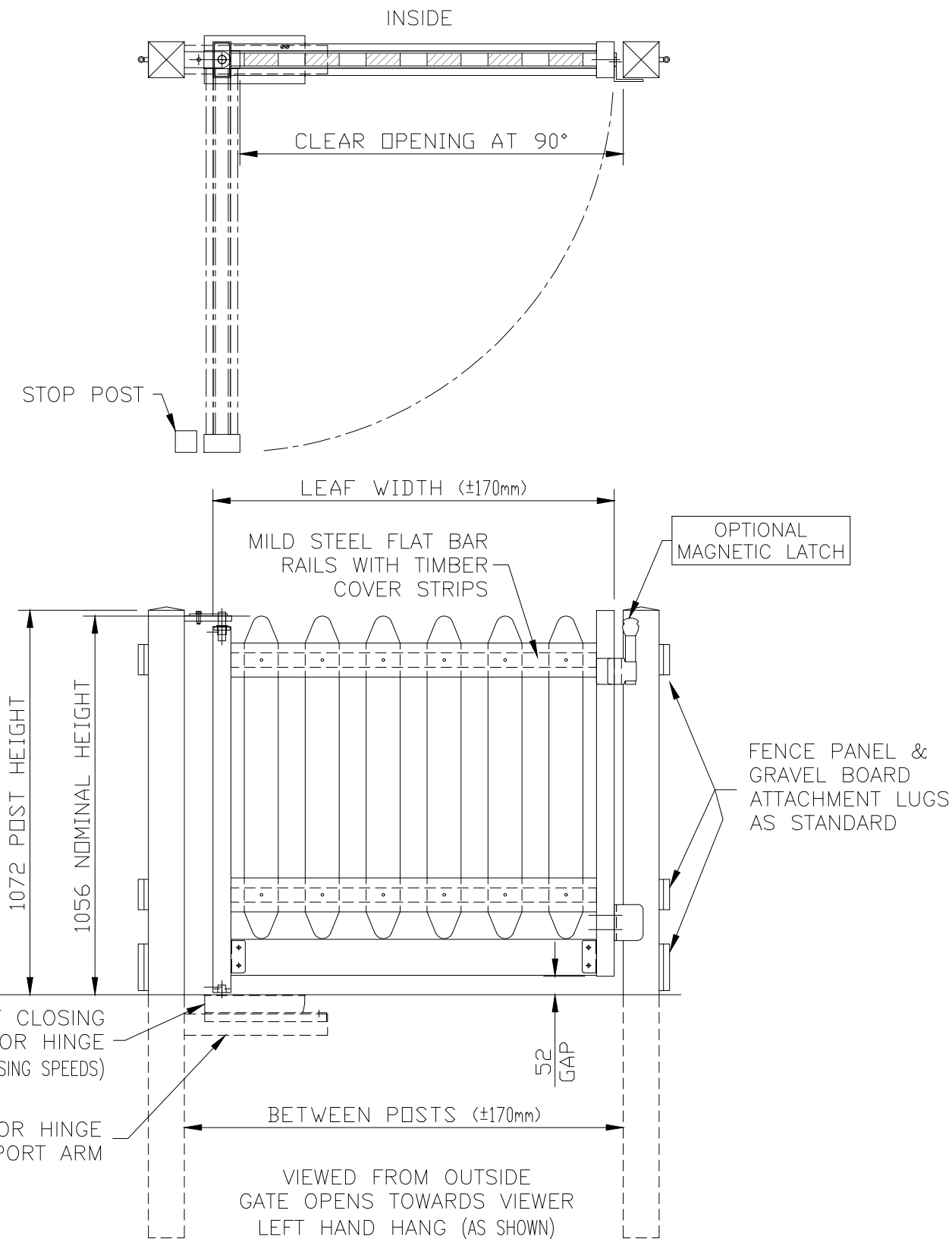
ALL DIMENSIONS ARE IN mm (UNO)  
GAPS UNDER GATES & FENCING ARE NOMINAL DUE TO GROUND LEVELS.

**MATERIALS.**

POSTS: 100 x 100 SHS  
RAILS: 40 x 6 MS FLAT  
STILES: 100 x 50 RHS

**FINISH.**

GALVANISED TO BS EN ISO 1461  
POWDER COATED: GREEN RAL 6005  
TIMBER: JAKCURED & STAINED OR PAINTED



**WOODEN TIMBER PLAYTIME SINGLE GATE – SELF CLOSING**

BETWEEN POSTS	LEAF SIZE	CLEAR OPENING
885	780	730
1055	950	900
<b>STANDARD SIZE</b>	<b>1225</b>	<b>1070</b>

**Jacksons Fencing**  
Stowting Common, Near Ashford, Kent. TN25 6BN  
Telephone: 01233 750393  
Fax: 01233 750403  
www.jacksons-fencing.co.uk

This Drawing Is The Property Of H.S. Jackson & Son (Fencing) Ltd, And May Not Be Copied Or Reproduced In Any Way Without Prior Written Permission.

DO NOT SCALE – IF IN DOUBT ASK

5	23/03/2020	NEW BORDER + NOTES
4	26/04/17	Drawing Updated
3	17/01/11	Pales amended
2	06/01/11	NOTES
1	01/08/08	1395 Gate Removed

Drawn SL	TITLE SALES DRAWING
Date 02/01/2007	WOODEN TIMBER PLAYTIME SINGLE SELF CLOSING GATE
Checked CJ	CUSTOMER
Size A3	ACK No.
Scale 1:16 U.O.S	Drawing No. J8/04017 Sheet 3